

LC3A Rabbit mAb

Catalog No: #52795

Package Size: #52795-1 50ul #52795-2 100ul

Orders: order@signalwayantibody.com

Support: tech@signalwayantibody.com

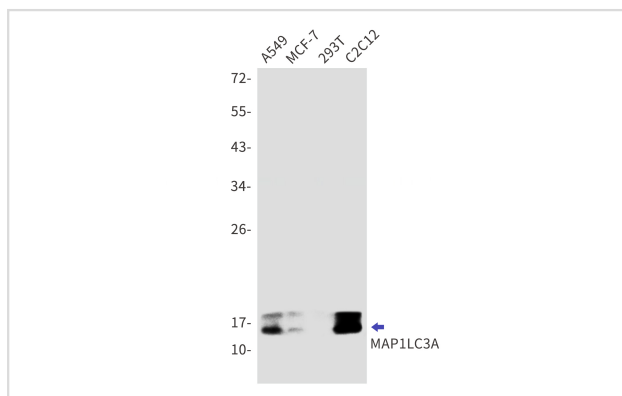
Description

Product Name	LC3A Rabbit mAb
Host Species	Recombinant Rabbit
Clonality	Monoclonal antibody
Clone No.	S05-1B6
Isotype	IgG
Purification	Affinity Purified
Applications	WB
Species Reactivity	Human,Mouse,Rat
Immunogen Description	A synthetic peptide of human MAP1LC3A
Conjugates	Unconjugated
Modification	Unmodification
Other Names	LC3; LC3A; ATG8E; MAP1ALC3; MAP1BLC3
Accession No.	Swiss-Prot:Q9H492GeneID:84557
Uniprot	Q9H492
GeneID	84557
Calculated MW	Calculated MW:14 kDa,Observed MW:16 kDa
Concentration	0.3 mg/ml
Formulation	50mM Tris-Glycine(pH 7.4), 0.15M NaCl, 40% Glycerol, 0.01% Sodium azide and 0.05% BSA
Storage	Store at 4°C short term. Aliquot and store at -20°C long term. Avoid freeze/thaw cycles.

Application Details

WB: 1/1000;

Images



Western blot detection of LC3A in A549, MCF-7, 293T, C2C12 cell lysates using LC3A Rabbit mAb (1:1000 diluted). Predicted band size: 14 kDa. Observed band size: 16 kDa.

Background

MAP1A and MAP1B are microtubule-associated proteins which mediate the physical interactions between microtubules and components of the cytoskeleton. MAP1A and MAP1B each consist of a heavy chain subunit and multiple light chain subunits. The protein encoded by this gene is one of the light chain subunits and can associate with either MAP1A or MAP1B. Two transcript variants encoding different isoforms have been found for this gene. The expression of variant 1 is suppressed in many tumor cell lines, suggesting that may be involved in carcinogenesis. [provided by RefSeq, Feb 2012]

Note: This product is for in vitro research use only