

## Meckelin Rabbit mAb

Catalog No: #52801

Package Size: #52801-1 50ul #52801-2 100ul

Orders: order@signalwayantibody.com

Support: tech@signalwayantibody.com

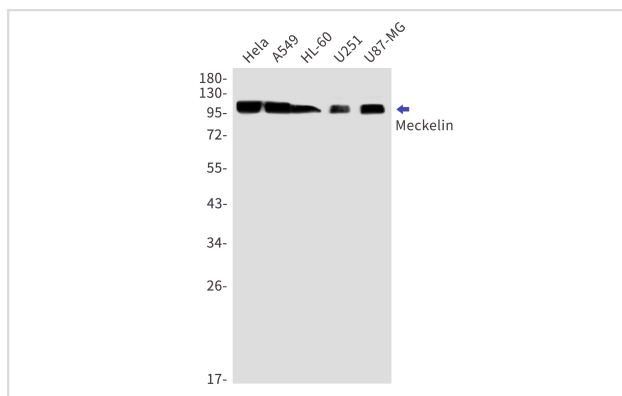
## Description

|                       |  |
|-----------------------|--|
| Product Name          | Meckelin Rabbit mAb  |
| Host Species          | Recombinant Rabbit   |
| Clonality             | Monoclonal antibody  |
| Clone No.             | S07-2A4  |
| Isotype               | IgG  |
| Purification          | Affinity Purified  |
| Applications          | WB IF  |
| Species Reactivity    | Human,Mouse,Rat  |
| Immunogen Description | A synthetic peptide of human Meckelin  |
| Conjugates            | Unconjugated   |
| Modification          | Unmodification   |
| Other Names           | MKS3; JBTS6; NPHP11; TNEM67; MECKELIN  |
| Accession No.         | Swiss-Prot:Q5HYA8GeneID:91147  |
| Uniprot               | Q5HYA8   |
| GeneID                | 91147  |
| Calculated MW         | Calculated MW:112 kDa,Observed MW:112 kDa  |
| Concentration         | 0.3 mg/ml  |
| Formulation           | 50mM Tris-Glycine(pH 7.4), 0.15M NaCl, 40% Glycerol, 0.01% Sodium azide and 0.05% BSA    |
| Storage               | Store at 4°C short term. Aliquot and store at -20°C long term. Avoid freeze/thaw cycles. |

## Application Details

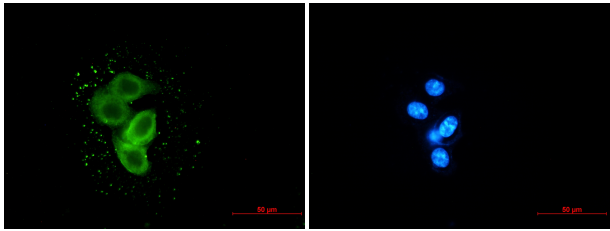
WB: 1/1000 ICC/IF: 1/200

## Images



Western blot detection of Meckelin in HeLa,A549,HL-60,U251,U87-MG cell lysates using Meckelin Rabbit mAb(1:1000 diluted).Predicted band size:112kDa.Observed band size:112kDa.

Immunocytochemistry of Meckelin (green) in MCF-7 using Meckelin antibody at dilution 1/20, and DAPI(blue)



## Background

Required for ciliary structure and function. Part of the tectonic-like complex which is required for tissue-specific ciliogenesis and may regulate ciliary membrane composition (By similarity).

Note: This product is for in vitro research use only