

## MELK Rabbit mAb

Catalog No: #52802

Package Size: #52802-1 50ul #52802-2 100ul

Orders: order@signalwayantibody.com

Support: tech@signalwayantibody.com

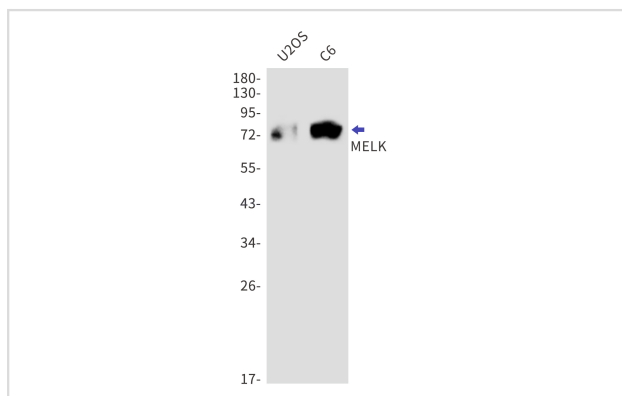
## Description

Product Name	MELK Rabbit mAb
Host Species	Recombinant Rabbit
Clonality	Monoclonal antibody
Clone No.	S06-4D6
Isotype	IgG
Purification	Affinity Purified
Applications	WB
Species Reactivity	Human
Immunogen Description	A synthetic peptide of human MELK
Conjugates	Unconjugated
Modification	Unmodification
Other Names	HPK38
Accession No.	Swiss-Prot:Q14680GeneID:9833
Uniprot	Q14680
GeneID	9833
Calculated MW	Calculated MW:75 kDa,Observed MW:75 kDa
Concentration	0.3 mg/ml
Formulation	50mM Tris-Glycine(pH 7.4), 0.15M NaCl, 40% Glycerol, 0.01% Sodium azide and 0.05% BSA
Storage	Store at 4°C short term. Aliquot and store at -20°C long term. Avoid freeze/thaw cycles.

## Application Details

WB: 1/1000

## Images



Western blot detection of MELK in U2OS,C6 cell lysates using MELK Rabbit mAb(1:1000 diluted).Predicted band size:75kDa.Observed band size:75kDa.

## Background

---

Serine/threonine-protein kinase involved in various processes such as cell cycle regulation, self-renewal of stem cells, apoptosis and splicing regulation

---

Note: This product is for in vitro research use only