

MAPKAP Kinase 2 Rabbit mAb

Catalog No: #52806

Package Size: #52806-1 50ul #52806-2 100ul

Orders: order@signalwayantibody.com

Support: tech@signalwayantibody.com

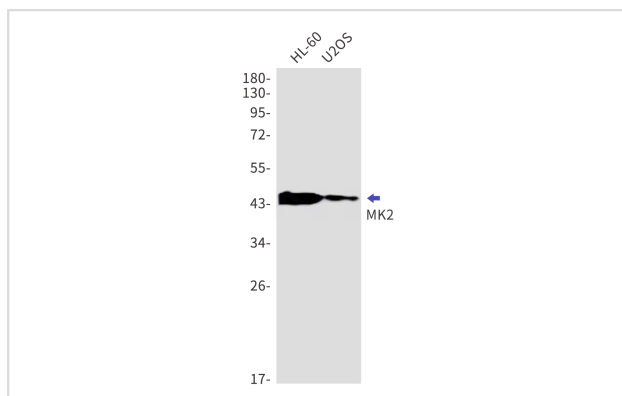
Description

Product Name	MAPKAP Kinase 2 Rabbit mAb
Host Species	Recombinant Rabbit
Clonality	Monoclonal antibody
Clone No.	S07-1F5
Isotype	IgG
Purification	Affinity Purified
Applications	WB
Species Reactivity	Human,Mouse,Rat
Immunogen Description	A synthetic peptide of human MK2
Conjugates	Unconjugated
Modification	Unmodification
Other Names	MK2; MK-2; MAPKAP-K2
Accession No.	Swiss-Prot:P49137GenelD:9261
Uniprot	P49137
GenelD	9261
Calculated MW	Calculated MW:46 kDa,Observed MW:46 kDa
Concentration	0.3 mg/ml
Formulation	50mM Tris-Glycine(pH 7.4), 0.15M NaCl, 40% Glycerol, 0.01% Sodium azide and 0.05% BSA
Storage	Store at 4°C short term. Aliquot and store at -20°C long term. Avoid freeze/thaw cycles.

Application Details

WB: 1/1000

Images



Western blot detection of MK2 in HL-60,U2OS cell lysates using MK2 Rabbit mAb(1:1000 diluted).Predicted band size:46kDa.Observed band size:46kDa.

Background

This gene encodes a member of the Ser/Thr protein kinase family. This kinase is regulated through direct phosphorylation by p38 MAP kinase. In conjunction with p38 MAP kinase, this kinase is known to be involved in many cellular processes including stress and inflammatory responses, nuclear export, gene expression regulation and cell proliferation. Heat shock protein HSP27 was shown to be one of the substrates of this kinase in vivo. Two transcript variants encoding two different isoforms have been found for this gene. [provided by RefSeq, Jul 2008]

Note: This product is for in vitro research use only