

## MLH1 Rabbit mAb

Catalog No: #52807

Package Size: #52807-1 50ul #52807-2 100ul

Orders: order@signalwayantibody.com

Support: tech@signalwayantibody.com

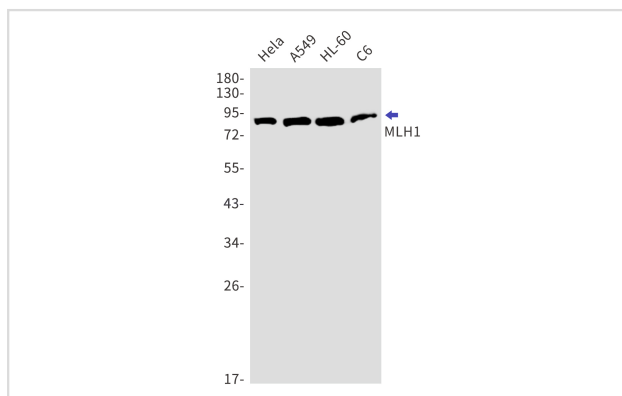
## Description

Product Name	MLH1 Rabbit mAb
Host Species	Recombinant Rabbit
Clonality	Monoclonal antibody
Clone No.	S07-5D3
Isotype	IgG
Purification	Affinity Purified
Applications	WB IF
Species Reactivity	Human
Immunogen Description	Recombinant protein of human MLH1
Conjugates	Unconjugated
Modification	Unmodification
Other Names	FCC2; COCA2; HNPCC; hMLH1; HNPCC2
Accession No.	Swiss-Prot:P40692GenelD:4292
Uniprot	P40692
GenelD	4292
Calculated MW	Calculated MW:85 kDa,Observed MW:85 kDa
Concentration	0.3 mg/ml
Formulation	50mM Tris-Glycine(pH 7.4), 0.15M NaCl, 40% Glycerol, 0.01% Sodium azide and 0.05% BSA
Storage	Store at 4°C short term. Aliquot and store at -20°C long term. Avoid freeze/thaw cycles.

## Application Details

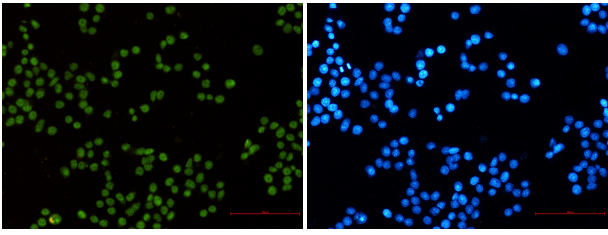
WB: 1/1000

## Images



Western blot detection of MLH1 in HeLa, A549, HL-60, U2OS cell lysates using MLH1 Rabbit mAb (1:1000 diluted). Predicted band size: 85 kDa. Observed band size: 85 kDa.

Immunocytochemistry of MLH1 (green) in hela using MLH1 Rabbit mAb at dilution 1/50, and DAPI(blue)



## Background

The protein encoded by this gene can heterodimerize with mismatch repair endonuclease PMS2 to form MutL alpha, part of the DNA mismatch repair system. When MutL alpha is bound by MutS beta and some accessory proteins, the PMS2 subunit of MutL alpha introduces a single-strand break near DNA mismatches, providing an entry point for exonuclease degradation. The encoded protein is also involved in DNA damage signaling and can heterodimerize with DNA mismatch repair protein MLH3 to form MutL gamma, which is involved in meiosis. This gene was identified as a locus frequently mutated in hereditary nonpolyposis colon cancer (HNPCC). [provided by RefSeq, Aug 2017]

Note: This product is for in vitro research use only