

MPP1 Rabbit mAb

Catalog No: #52809

Package Size: #52809-1 50ul #52809-2 100ul

Orders: order@signalwayantibody.com

Support: tech@signalwayantibody.com

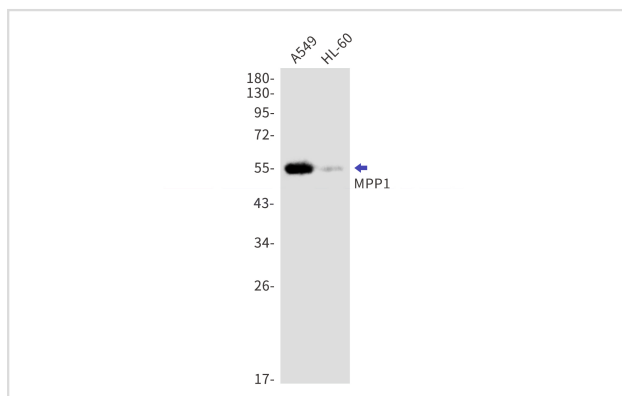
Description

Product Name	MPP1 Rabbit mAb
Host Species	Recombinant Rabbit
Clonality	Monoclonal antibody
Clone No.	S03-1F4
Isotype	IgG
Purification	Affinity Purified
Applications	WB
Species Reactivity	Human,Mouse
Immunogen Description	A synthetic peptide of human MPP1
Conjugates	Unconjugated
Modification	Unmodification
Other Names	MRG1; PEMP; AAG12; EMP55; DXS552E
Accession No.	Swiss-Prot:Q00013GeneID:4354
Uniprot	Q00013
GeneID	4354
Calculated MW	Calculated MW:52 kDa,Observed MW:55 kDa
Concentration	0.3 mg/ml
Formulation	50mM Tris-Glycine(pH 7.4), 0.15M NaCl, 40% Glycerol, 0.01% Sodium azide and 0.05% BSA
Storage	Store at 4°C short term. Aliquot and store at -20°C long term. Avoid freeze/thaw cycles.

Application Details

WB: 1/1000

Images



Western blot detection of MPP1 in A549,HL-60 cell lysates using MPP1 Rabbit mAb(1:1000 diluted).Predicted band size:52kDa.Observed band size:55kDa.

Background

Essential regulator of neutrophil polarity. Regulates neutrophil polarization by regulating AKT1 phosphorylation through a mechanism that is independent of PIK3CG activity (By similarity).

Note: This product is for in vitro research use only