

alpha Skeletal Muscle Actin Rabbit mAb

Catalog No: #52814

Package Size: #52814-1 50ul #52814-2 100ul

Orders: order@signalwayantibody.com

Support: tech@signalwayantibody.com

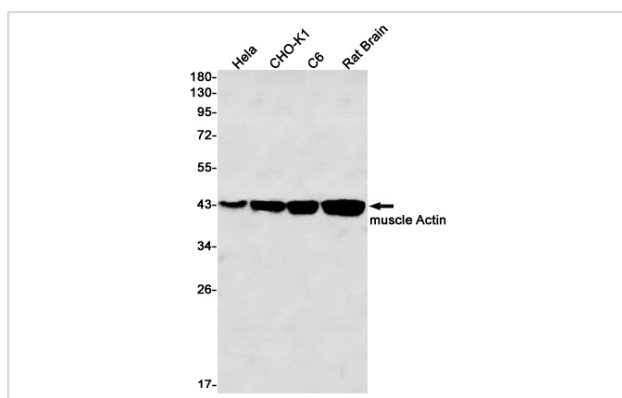
Description

Product Name	alpha Skeletal Muscle Actin Rabbit mAb
Host Species	Recombinant Rabbit
Clonality	Monoclonal antibody
Clone No.	S05-4F6
Isotype	IgG
Purification	Affinity Purified
Applications	WB IHC
Species Reactivity	Human,Mouse,Rat
Immunogen Description	A synthetic peptide of human muscle Actin
Conjugates	Unconjugated
Modification	Unmodification
Other Names	ACTA; ASMA; CFTD; MPFD; NEM1; NEM2; NEM3; SHPM; CFTD1; CFTDM
Accession No.	Swiss-Prot:P68133GeneID:58
Uniprot	P68133
GeneID	58
Calculated MW	Calculated MW:42 kDa,Observed MW:42 kDa
Concentration	0.3 mg/ml
Formulation	50mM Tris-Glycine(pH 7.4), 0.15M NaCl, 40% Glycerol, 0.01% Sodium azide and 0.05% BSA
Storage	Store at 4°C short term. Aliquot and store at -20°C long term. Avoid freeze/thaw cycles.

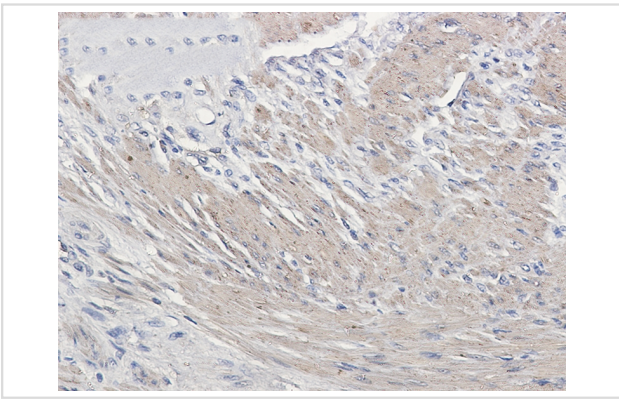
Application Details

WB: 1/1000; IHC: 1/50;

Images



Western blot detection of muscle Actin in HeLa, CHO-K1, C6, Rat Brain lysates using muscle Actin Rabbit mAb (1:1000 diluted). Predicted band size: 42 kDa. Observed band size: 42 kDa.



Immunohistochemistry of muscle Actin in paraffin-embedded Human colon cancer tissue using muscle Actin Rabbit mAb at dilution 1/50

Background

Actins are highly conserved proteins that are involved in various types of cell motility and are ubiquitously expressed in all eukaryotic cells.

Note: This product is for in vitro research use only