

NDUFS1 Rabbit mAb

Catalog No: #52816

Package Size: #52816-1 50ul #52816-2 100ul

Orders: order@signalwayantibody.com

Support: tech@signalwayantibody.com

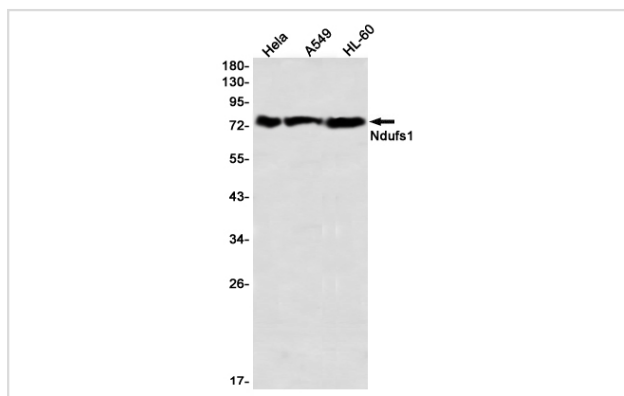
Description

Product Name	NDUFS1 Rabbit mAb
Host Species	Recombinant Rabbit
Clonality	Monoclonal antibody
Clone No.	S02-3I2
Isotype	IgG
Purification	Affinity Purified
Applications	WB IHC
Species Reactivity	Human,Mouse,Rat
Immunogen Description	A synthetic peptide of human Ndufs1
Conjugates	Unconjugated
Modification	Unmodification
Other Names	CI-75k; MC1DN5; CI-75Kd; PRO1304
Accession No.	Swiss-Prot:P28331GenelD:4719
Uniprot	P28331
GenelD	4719
Calculated MW	Calculated MW:80 kDa,Observed MW:77 kDa
Concentration	0.3 mg/ml
Formulation	50mM Tris-Glycine(pH 7.4), 0.15M NaCl, 40% Glycerol, 0.01% Sodium azide and 0.05% BSA
Storage	Store at 4°C short term. Aliquot and store at -20°C long term. Avoid freeze/thaw cycles.

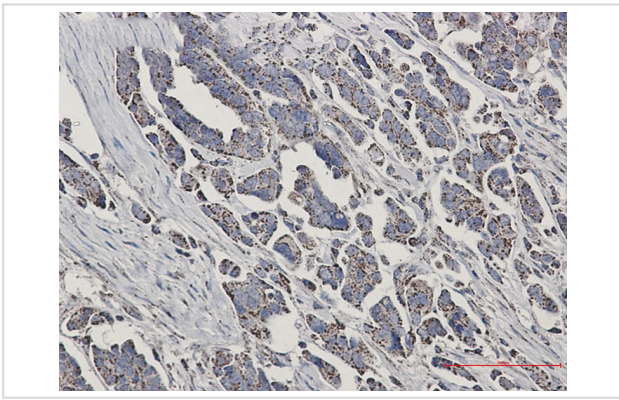
Application Details

WB: 1/2000-1/10000 IHC: 1/20

Images



Western blot detection of Ndufs1 in HeLa,A549,HL-60 using Ndufs1 Rabbit mAb(1:1000 diluted)



Immunohistochemistry of Ndufs1 in paraffin-embedded Human Cholangiocarcinoma using Ndufs1 Rabbit mAb at dilution 1/50

Background

Core subunit of the mitochondrial membrane respiratory chain NADH dehydrogenase (Complex I) which catalyzes electron transfer from NADH through the respiratory chain, using ubiquinone as an electron acceptor

Note: This product is for in vitro research use only