

NM23A Rabbit mAb

Catalog No: #52821

Package Size: #52821-1 50ul #52821-2 100ul

Orders: order@signalwayantibody.com

Support: tech@signalwayantibody.com

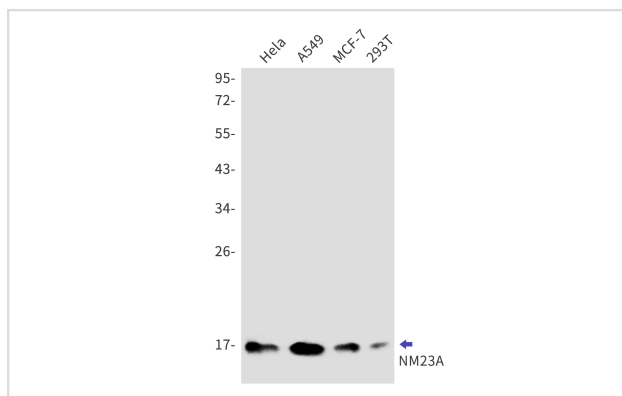
Description

Product Name	NM23A Rabbit mAb
Host Species	Recombinant Rabbit
Clonality	Monoclonal antibody
Clone No.	S01-6C0
Isotype	IgG
Purification	Affinity Purified
Applications	WB
Species Reactivity	Human
Immunogen Description	A synthetic peptide of human NM23A
Conjugates	Unconjugated
Modification	Unmodification
Other Names	NB; AWD; NBS; GAAD; NDKA; NM23; NDPKA; NDPK-A; NM23-H1
Accession No.	Swiss-Prot:P15531GenelD:4830
Uniprot	P15531
GenelD	4830
Calculated MW	Calculated MW:17 kDa,Observed MW:17 kDa
Concentration	0.3 mg/ml
Formulation	50mM Tris-Glycine(pH 7.4), 0.15M NaCl, 40% Glycerol, 0.01% Sodium azide and 0.05% BSA
Storage	Store at 4°C short term. Aliquot and store at -20°C long term. Avoid freeze/thaw cycles.

Application Details

WB: 1/1000

Images



Western blot detection of NM23A in HeLa,A549,MCF-7,293T cell lysates using NM23A Rabbit mAb(1:1000 diluted).Predicted band size:17kDa.Observed band size:17kDa.

Background

This gene (NME1) was identified because of its reduced mRNA transcript levels in highly metastatic cells. Nucleoside diphosphate kinase (NDK) exists as a hexamer composed of 'A' (encoded by this gene) and 'B' (encoded by NME2) isoforms. Mutations in this gene have been identified in aggressive neuroblastomas. Two transcript variants encoding different isoforms have been found for this gene. Co-transcription of this gene and the neighboring downstream gene (NME2) generates naturally-occurring transcripts (NME1-NME2), which encodes a fusion protein comprised of sequence sharing identity with each individual gene product. [provided by RefSeq, Jul 2008]

Note: This product is for in vitro research use only