

NME2 Rabbit mAb

Catalog No: #52822

Package Size: #52822-1 50ul #52822-2 100ul

Orders: order@signalwayantibody.com

Support: tech@signalwayantibody.com

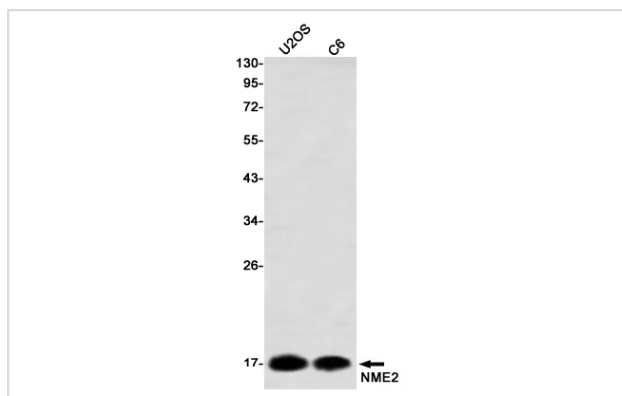
Description

Product Name	NME2 Rabbit mAb
Host Species	Recombinant Rabbit
Clonality	Monoclonal antibody
Clone No.	S08-1C1
Isotype	IgG
Purification	Affinity Purified
Applications	WB IHC
Species Reactivity	Human,Mouse,Rat
Immunogen Description	A synthetic peptide of human NME2
Conjugates	Unconjugated
Modification	Unmodification
Other Names	PUF; NDKB; NDPKB; NM23B; NDPK-B; NM23-H2
Accession No.	Swiss-Prot:P22392GenelD:4831
Uniprot	P22392
GenelD	4831
Calculated MW	Calculated MW:17 kDa,Observed MW:17 kDa
Concentration	0.3 mg/ml
Formulation	50mM Tris-Glycine(pH 7.4), 0.15M NaCl, 40% Glycerol, 0.01% Sodium azide and 0.05% BSA
Storage	Store at 4°C short term. Aliquot and store at -20°C long term. Avoid freeze/thaw cycles.

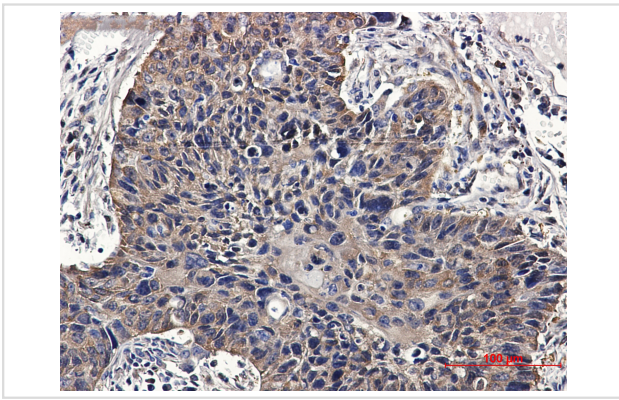
Application Details

WB: 1/1000 IHC: 1/50

Images



Western blot detection of NME2 in U2OS,C6,Ramos using NME2 Rabbit mAb(1:1000 diluted)



Immunohistochemical of NME2 in Human lung cancer tissue using NME2 antibody at dilution 1/50

Background

Major role in the synthesis of nucleoside triphosphates other than ATP. The ATP gamma phosphate is transferred to the NDP beta phosphate via a ping-pong mechanism, using a phosphorylated active-site intermediate (By similarity).

Negatively regulates Rho activity by interacting with AKAP13/LBC (PubMed:15249197).

Acts as a transcriptional activator of the MYC gene; binds DNA non-specifically (PubMed:8392752, PubMed:19435876).

Note: This product is for in vitro research use only