

Nucleolin Rabbit mAb

Catalog No: #52824

Package Size: #52824-1 50ul #52824-2 100ul

Orders: order@signalwayantibody.com

Support: tech@signalwayantibody.com

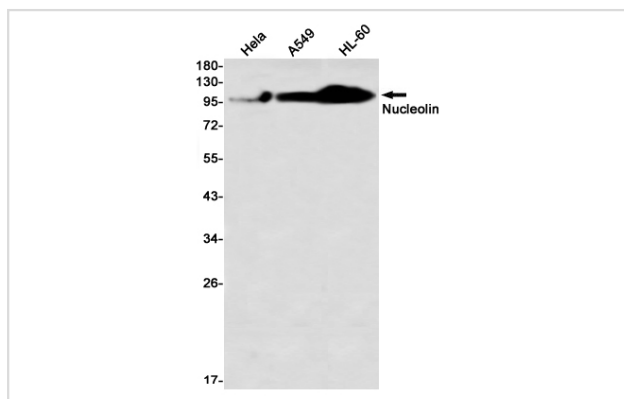
Description

Product Name	Nucleolin Rabbit mAb
Host Species	Recombinant Rabbit
Clonality	Monoclonal antibody
Clone No.	S08-6H3
Isotype	IgG
Purification	Affinity Purified
Applications	WB
Species Reactivity	Human,Mouse,Rat
Immunogen Description	A synthetic peptide of human Nucleolin
Conjugates	Unconjugated
Modification	Unmodification
Other Names	C23; Nsr1
Accession No.	Swiss-Prot:P19338GenelD:4691
Uniprot	P19338
GenelD	4691
Calculated MW	Calculated MW:77 kDa,Observed MW:100 kDa
Concentration	0.3 mg/ml
Formulation	50mM Tris-Glycine(pH 7.4), 0.15M NaCl, 40% Glycerol, 0.01% Sodium azide and 0.05% BSA
Storage	Store at 4°C short term. Aliquot and store at -20°C long term. Avoid freeze/thaw cycles.

Application Details

WB: 1/2000-1/10000

Images



Western blot detection of Nucleolin in HeLa,A549,HL-60 using Nucleolin Rabbit mAb(1:1000 diluted)

Background

Nucleolin is the major nucleolar protein of growing eukaryotic cells. It is found associated with intranucleolar chromatin and pre-ribosomal particles. It induces chromatin decondensation by binding to histone H1. It is thought to play a role in pre-rRNA transcription and ribosome assembly. May play a role in the process of transcriptional elongation. Binds RNA oligonucleotides with 5'-UUAGGG-3' repeats more tightly than the telomeric single-stranded DNA 5'-TTAGGG-3' repeats.

Note: This product is for in vitro research use only