

## ORAI3 Rabbit mAb

Catalog No: #52830

Package Size: #52830-1 50ul #52830-2 100ul

Orders: order@signalwayantibody.com

Support: tech@signalwayantibody.com

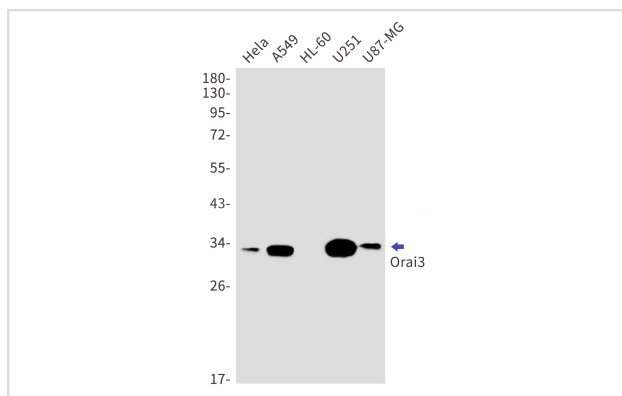
## Description

Product Name	ORAI3 Rabbit mAb
Host Species	Recombinant Rabbit
Clonality	Monoclonal antibody
Clone No.	S06-8B3
Isotype	IgG
Purification	Affinity Purified
Applications	WB IHC
Species Reactivity	Human,Mouse
Immunogen Description	Recombinant protein of human Orai3
Conjugates	Unconjugated
Modification	Unmodification
Other Names	TMEM142C
Accession No.	Swiss-Prot:Q9BRQ5GenelD:93129
Uniprot	Q9BRQ5
GenelD	93129
Calculated MW	Calculated MW:32 kDa,Observed MW:32 kDa
Concentration	0.3 mg/ml
Formulation	50mM Tris-Glycine(pH 7.4), 0.15M NaCl, 40% Glycerol, 0.01% Sodium azide and 0.05% BSA
Storage	Store at 4°C short term. Aliquot and store at -20°C long term. Avoid freeze/thaw cycles.

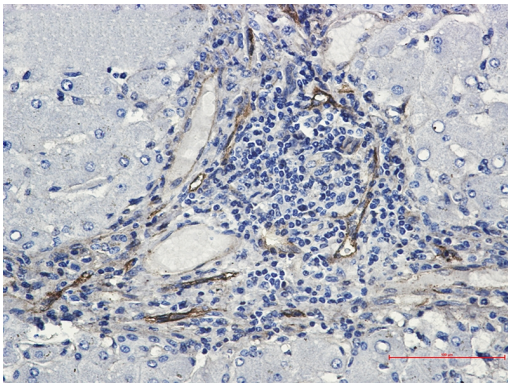
## Application Details

WB: 1/1000 IHC: 1/100

## Images



Western blot detection of Orai3 in HeLa,A549,HL-60,U251,U87-MG cell lysates using Orai3 Rabbit mAb(1:1000 diluted).Predicted band size:32kDa.Observed band size:32kDa.



Immunohistochemistry of Orai3 in paraffin-embedded liver cancer tissue using Orai3 Rabbit mAb at dilution 1/50

## Background

Ca<sup>2+</sup> release-activated Ca<sup>2+</sup>-like (CRAC-like) channel subunit which mediates Ca<sup>2+</sup> influx and increase in Ca<sup>2+</sup>-selective current by synergy with the Ca<sup>2+</sup> sensor, STIM1.

Note: This product is for in vitro research use only