

OTX1 Rabbit mAb

Catalog No: #52831

Package Size: #52831-1 50ul #52831-2 100ul

Orders: order@signalwayantibody.com

Support: tech@signalwayantibody.com

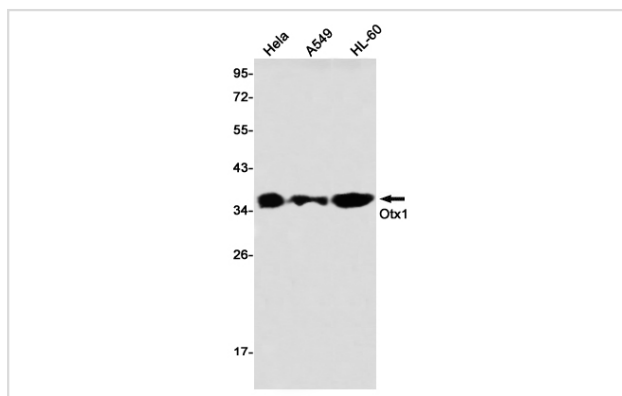
Description

Product Name	OTX1 Rabbit mAb
Host Species	Recombinant Rabbit
Clonality	Monoclonal antibody
Clone No.	S04-1D1
Isotype	IgG
Purification	Affinity Purified
Applications	WB
Species Reactivity	Human,Mouse,Rat
Immunogen Description	A synthetic peptide of human Otx1
Conjugates	Unconjugated
Modification	Unmodification
Other Names	Orthodenticle homolog 1
Accession No.	Swiss-Prot:P32242GenelD:5013
Uniprot	P32242
GenelD	5013
Calculated MW	Calculated MW:37 kDa,Observed MW:37 kDa
Concentration	0.3 mg/ml
Formulation	50mM Tris-Glycine(pH 7.4), 0.15M NaCl, 40% Glycerol, 0.01% Sodium azide and 0.05% BSA
Storage	Store at 4°C short term. Aliquot and store at -20°C long term. Avoid freeze/thaw cycles.

Application Details

WB: 1/1000

Images



Western blot detection of Otx1 in HeLa,A549,HL-60 using Otx1 Rabbit mAb(1:1000 diluted)

Background

Probably plays a role in the development of the brain and the sense organs. Can bind to the BCD target sequence (BTS): 5'-TCTAATCCC-3'.

Note: This product is for in vitro research use only