

P2Y13 Rabbit mAb

Catalog No: #52833

Package Size: #52833-1 50ul #52833-2 100ul

Orders: order@signalwayantibody.com

Support: tech@signalwayantibody.com

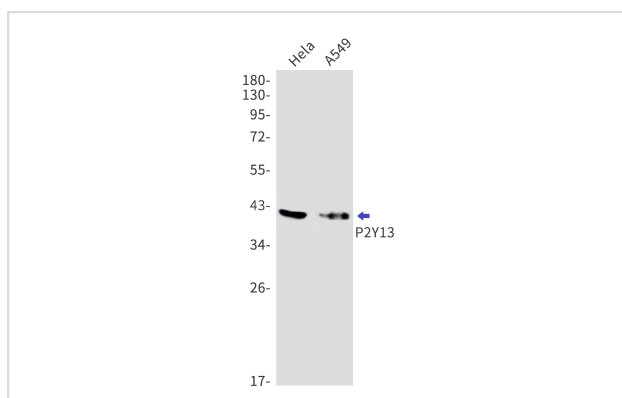
Description

Product Name	P2Y13 Rabbit mAb
Host Species	Recombinant Rabbit
Clonality	Monoclonal antibody
Clone No.	S02-311
Isotype	IgG
Purification	Affinity Purified
Applications	WB
Species Reactivity	Human,Mouse,Rat
Immunogen Description	A synthetic peptide of human P2Y13
Conjugates	Unconjugated
Modification	Unmodification
Other Names	GPCR1; GPR86; GPR94; P2Y13; SP174; FKSG77
Accession No.	Swiss-Prot:Q9BPV8GeneID:53829
Uniprot	Q9BPV8
GeneID	53829
Calculated MW	Calculated MW:41 kDa,Observed MW:41 kDa
Concentration	0.3 mg/ml
Formulation	50mM Tris-Glycine(pH 7.4), 0.15M NaCl, 40% Glycerol, 0.01% Sodium azide and 0.05% BSA
Storage	Store at 4°C short term. Aliquot and store at -20°C long term. Avoid freeze/thaw cycles.

Application Details

WB: 1/1000

Images



Western blot detection of P2Y13 in HeLa,A549 cell lysates using P2Y13 Rabbit mAb(1:1000 diluted).Predicted band size:41kDa.Observed band size:41kDa.

Background

The product of this gene belongs to the family of G-protein coupled receptors. This family has several receptor subtypes with different pharmacological selectivity, which overlaps in some cases, for various adenosine and uridine nucleotides. This receptor is activated by ADP. [provided by RefSeq, Sep 2008]

Note: This product is for in vitro research use only