

Paxillin Rabbit mAb

Catalog No: #52834

Package Size: #52834-1 50ul #52834-2 100ul

Orders: order@signalwayantibody.com

Support: tech@signalwayantibody.com

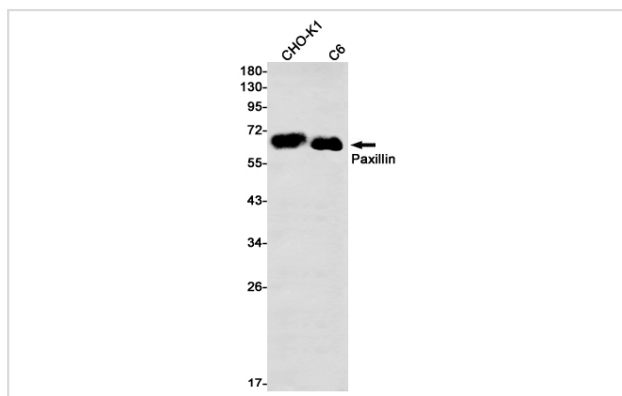
Description

Product Name	Paxillin Rabbit mAb
Host Species	Recombinant Rabbit
Clonality	Monoclonal antibody
Clone No.	S07-1B4
Isotype	IgG
Purification	Affinity Purified
Applications	WB IHC
Species Reactivity	Human,Mouse,Rat
Immunogen Description	A synthetic peptide of human Paxillin
Conjugates	Unconjugated
Modification	Unmodification
Other Names	PXN;Paxillin
Accession No.	Swiss-Prot:P49023GenelD:5829
Uniprot	P49023
GenelD	5829
Calculated MW	Calculated MW:65 kDa,Observed MW:65 kDa
Concentration	0.3 mg/ml
Formulation	50mM Tris-Glycine(pH 7.4), 0.15M NaCl, 40% Glycerol, 0.01% Sodium azide and 0.05% BSA
Storage	Store at 4°C short term. Aliquot and store at -20°C long term. Avoid freeze/thaw cycles.

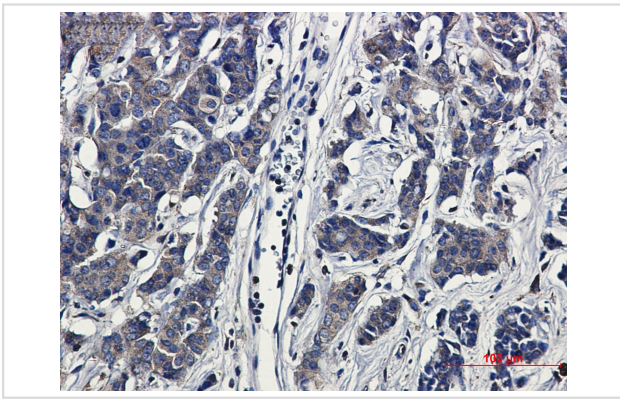
Application Details

WB: 1/2000 IHC: 1/20

Images



Western blot detection of Paxillin in CHO-K1,C6 cell lysates using Paxillin Rabbit mAb(1:1000 diluted).Predicted band size:65kDa.Observed band size:65kDa.



Immunohistochemical of Paxillin in Human breast cancer tissue using Paxillin antibody at dilution 1/20

Background

Cytoskeletal protein involved in actin-membrane attachment at sites of cell adhesion to the extracellular matrix (focal adhesion).

Note: This product is for in vitro research use only