

## Phospholipase C gamma 1 Rabbit mAb

Catalog No: #52837

Package Size: #52837-1 50ul #52837-2 100ul

Orders: order@signalwayantibody.com

Support: tech@signalwayantibody.com

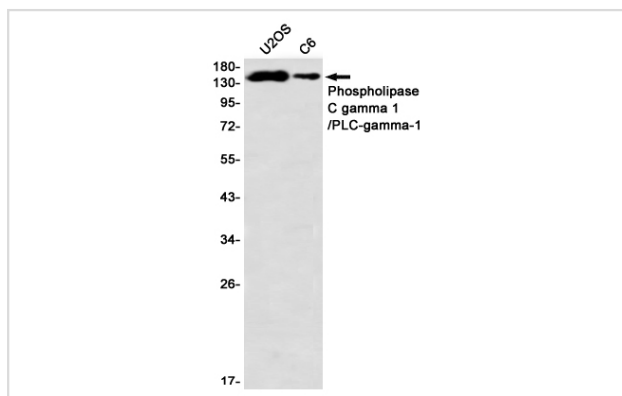
## Description

Product Name	Phospholipase C gamma 1 Rabbit mAb
Host Species	Recombinant Rabbit
Clonality	Monoclonal antibody
Clone No.	S01-6B4
Isotype	IgG
Purification	Affinity Purified
Applications	WB
Species Reactivity	Human,Mouse,Rat
Immunogen Description	A synthetic peptide of human Phospholipase C gamma 1/PLC-gamma-1
Conjugates	Unconjugated
Modification	Unmodification
Other Names	PLC1; NCKAP3; PLC-II; PLC148; PLCgamma1
Accession No.	Swiss-Prot:P19174GenelD:5335
Uniprot	P19174
GenelD	5335
Calculated MW	Calculated MW:149 kDa,Observed MW:149 kDa
Concentration	0.3 mg/ml
Formulation	50mM Tris-Glycine(pH 7.4), 0.15M NaCl, 40% Glycerol, 0.01% Sodium azide and 0.05% BSA
Storage	Store at 4°C short term. Aliquot and store at -20°C long term. Avoid freeze/thaw cycles.

## Application Details

WB: 1/2000

## Images



Western blot detection of Phospholipase C gamma 1/PLC-gamma-1 in U2OS,C6 using Phospholipase C gamma 1/PLC-gamma-1 Rabbit mAb(1:1000 diluted)

## Background

---

Mediates the production of the second messenger molecules diacylglycerol (DAG) and inositol 1,4,5-trisphosphate (IP3). Plays an important role in the regulation of intracellular signaling cascades. Becomes activated in response to ligand-mediated activation of receptor-type tyrosine kinases, such as PDGFRA, PDGFRB, EGFR, FGFR1, FGFR2, FGFR3 and FGFR4 (By similarity).

Plays a role in actin reorganization and cell migration (PubMed:17229814).

---

Note: This product is for in vitro research use only