

POLG Rabbit mAb

Catalog No: #52841

Package Size: #52841-1 50ul #52841-2 100ul

Orders: order@signalwayantibody.com

Support: tech@signalwayantibody.com

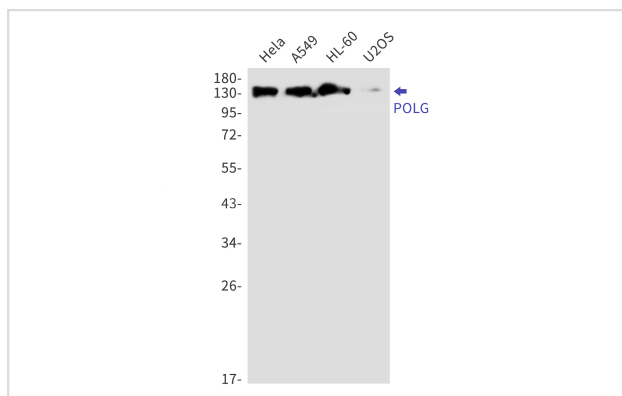
Description

Product Name	POLG Rabbit mAb
Host Species	Recombinant Rabbit
Clonality	Monoclonal antibody
Clone No.	S06-1G0
Isotype	IgG
Purification	Affinity Purified
Applications	WB
Species Reactivity	Human
Immunogen Description	A synthetic peptide of human POLG
Conjugates	Unconjugated
Modification	Unmodification
Other Names	PEO; MDP1; SCAE; MIRAS; POLG1; POLGA; SANDO; MTDPS4A; MTDPS4B
Accession No.	Swiss-Prot:P54098GenelD:5428
Uniprot	P54098
GenelD	5428
Calculated MW	Calculated MW:140 kDa,Observed MW:140 kDa
Concentration	0.3 mg/ml
Formulation	50mM Tris-Glycine(pH 7.4), 0.15M NaCl, 40% Glycerol, 0.01% Sodium azide and 0.05% BSA
Storage	Store at 4°C short term. Aliquot and store at -20°C long term. Avoid freeze/thaw cycles.

Application Details

WB: 1/1000

Images



Western blot detection of POLG in HeLa,A549,HL-60,U2OS cell lysates using POLG Rabbit mAb(1:1000 diluted).Predicted band size:140kDa.Observed band size:140kDa.

Background

Involved in the replication of mitochondrial DNA. Associates with mitochondrial DNA.

Note: This product is for in vitro research use only