

Poliovirus Receptor Rabbit mAb

Catalog No: #52843

Package Size: #52843-1 50ul #52843-2 100ul

Orders: order@signalwayantibody.com

Support: tech@signalwayantibody.com

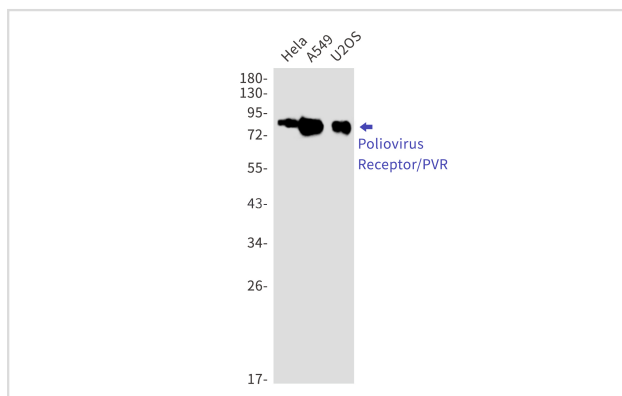
Description

Product Name	Poliovirus Receptor Rabbit mAb
Host Species	Recombinant Rabbit
Clonality	Monoclonal antibody
Clone No.	S04-2C7
Isotype	IgG
Purification	Affinity Purified
Applications	WB IHC
Species Reactivity	Human
Immunogen Description	Recombinant protein of human Poliovirus Receptor/PVR
Conjugates	Unconjugated
Modification	Unmodification
Other Names	PVS; HVED; CD155; NECL5; TAGE4; Necl-5
Accession No.	Swiss-Prot:P15151GenelD:5817
Uniprot	P15151
GenelD	5817
Calculated MW	Calculated MW:45 kDa,Observed MW:60-80 kDa
Concentration	0.3 mg/ml
Formulation	50mM Tris-Glycine(pH 7.4), 0.15M NaCl, 40% Glycerol, 0.01% Sodium azide and 0.05% BSA
Storage	Store at 4°C short term. Aliquot and store at -20°C long term. Avoid freeze/thaw cycles.

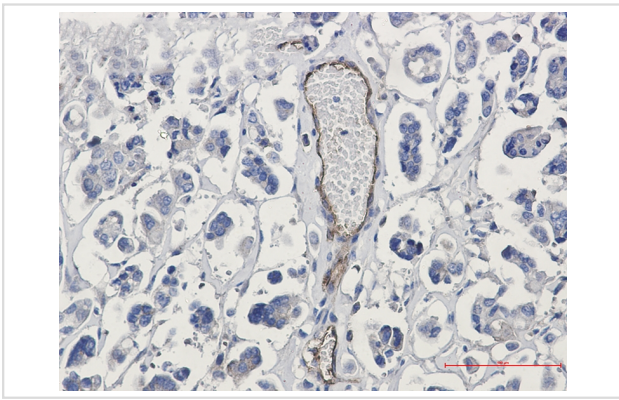
Application Details

WB: 1/1000 IHC: 1/50

Images



Western blot detection of Poliovirus Receptor/PVR in HeLa,A549,U2OS cell lysates using Poliovirus Receptor/PVR Rabbit mAb(1:1000 diluted).Predicted band size:45kDa.Observed band size:60-80kDa.



Immunohistochemistry of Poliovirus Receptor/PVR in paraffin-embedded Human Cholangiocarcinoma using Poliovirus Receptor/PVR Rabbit mAb at dilution 1/50

Background

Mediates NK cell adhesion and triggers NK cell effector functions. Binds two different NK cell receptors: CD96 and CD226. These interactions accumulate at the cell-cell contact site, leading to the formation of a mature immunological synapse between NK cell and target cell. This may trigger adhesion and secretion of lytic granules and IFN-gamma and activate cytotoxicity of activated NK cells. May also promote NK cell-target cell modular exchange, and PVR transfer to the NK cell. This transfer is more important in some tumor cells expressing a lot of PVR, and may trigger fratricide NK cell activation, providing tumors with a mechanism of immunoevasion. Plays a role in mediating tumor cell invasion and migration.

Note: This product is for in vitro research use only