

Rad51 Rabbit mAb

Catalog No: #52848

Package Size: #52848-1 50ul #52848-2 100ul

Orders: order@signalwayantibody.com

Support: tech@signalwayantibody.com

Description

Product Name	Rad51 Rabbit mAb
Clone No.	S04-3C6
Isotype	IgG
Purification	Affinity-chromatography
Applications	WB;IHC;ICC/IF;IP;FC
Species Reactivity	Human;Mouse;Rat
Immunogen Description	A synthesized peptide derived from human RAD51
Conjugates	Unconjugated
Modification	Unmodification
Other Names	RECA; BRCC5; FANCR; MRMV2; HRAD51; RAD51A; HsRad51; HsT16930
Accession No.	Swiss-Prot:Q06609GeneID:5888
Uniprot	Q06609
GeneID	5888
Calculated MW	Calculated MW:37 kDa,Observed MW:37 kDa
Concentration	2mg/ml
Formulation	Rabbit IgG in 10mM phosphate buffered saline , pH 7.4, 150mM sodium chloride, 0.05% BSA, 0.02% sodium azide and 50% glycerol.
Storage	Store at 4°C short term. Aliquot and store at -20°C long term. Avoid freeze/thaw cycles.

Application Details

WB 1:1000-1:5000

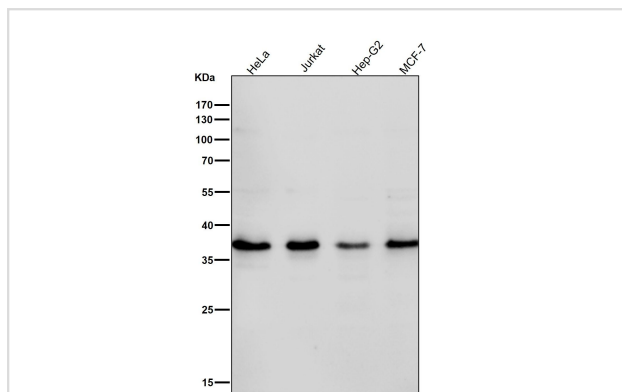
IHC 1:100-1:200

ICC/IF 1:50-1:200

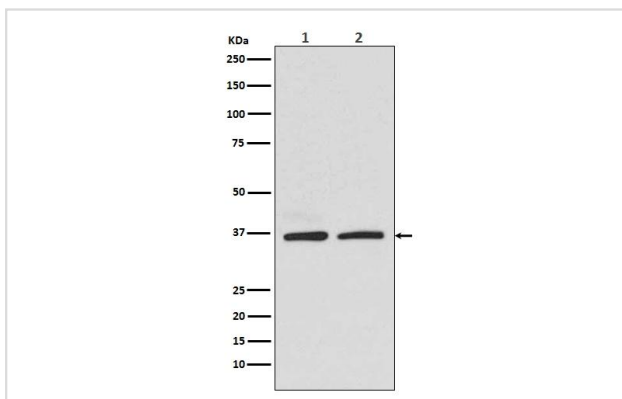
IP 1:20-1:50

FC 1:20-1:100

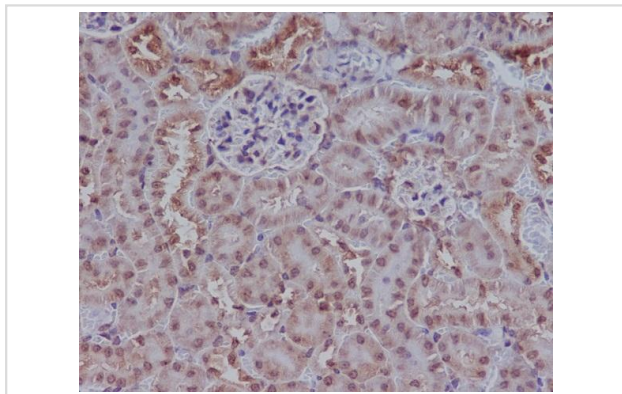
Images



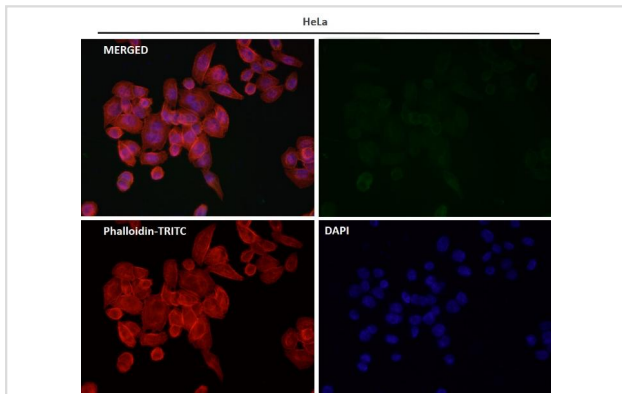
All lanes use the Antibody at 1:3K dilution for 1 hour at room temperature.



Western blot analysis of Rad51 in (1)HEK293 cell lysate; (2)K562 cell lysate.



Immunohistochemical analysis of paraffin-embedded mouse kidney, using Rad51 Antibody.



Immunofluorescent analysis using the Antibody at 1:50 dilution.

Background

Rad51 participates in a common DNA damage response pathway associated with the activation of homologous recombination and double-strand break repair. Binds to single and double-stranded DNA and exhibits DNA-dependent ATPase activity. Underwinds duplex DNA and forms helical nucleoprotein filaments.

Note: This product is for in vitro research use only