

GTPase HRAS Rabbit mAb

Catalog No: #52849

Package Size: #52849-1 50ul #52849-2 100ul

Orders: order@signalwayantibody.com

Support: tech@signalwayantibody.com

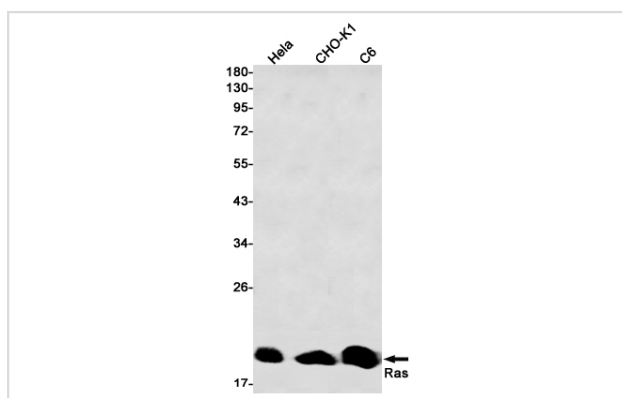
Description

Product Name	GTPase HRAS Rabbit mAb
Host Species	Recombinant Rabbit
Clonality	Monoclonal antibody
Clone No.	S01-7D0
Isotype	IgG
Purification	Affinity Purified
Applications	WB
Species Reactivity	Human,Mouse,Rat
Immunogen Description	A synthetic peptide of human Ras
Conjugates	Unconjugated
Modification	Unmodification
Other Names	CTLO; HAMSIV; HRAS1; RASH1; p21ras; C-H-RAS; H-RASIDX; C-BAS/HAS; C-HA-RAS1
Accession No.	Swiss-Prot:P01111GenelD:326538454893
Uniprot	P01111
GenelD	326,538,454,893
Calculated MW	Calculated MW:21 kDa,Observed MW:21 kDa
Concentration	0.3 mg/ml
Formulation	50mM Tris-Glycine(pH 7.4), 0.15M NaCl, 40% Glycerol, 0.01% Sodium azide and 0.05% BSA
Storage	Store at 4°C short term. Aliquot and store at -20°C long term. Avoid freeze/thaw cycles.

Application Details

WB: 1/1000;

Images



Western blot detection of Ras in HeLa,CHO-K1,C6 cell lysates using Ras Rabbit mAb(1:1000 diluted).Predicted band size:21kDa.Observed band size:21kDa.

Background

Ras proteins bind GDP/GTP and possess intrinsic GTPase activity.

Note: This product is for in vitro research use only