

RASA1 Rabbit mAb

Catalog No: #52850

Package Size: #52850-1 50ul #52850-2 100ul

Orders: order@signalwayantibody.comSupport: tech@signalwayantibody.com

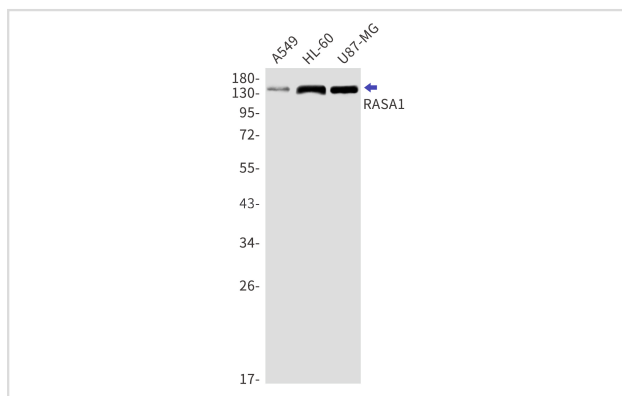
Description

Product Name	RASA1 Rabbit mAb
Host Species	Recombinant Rabbit
Clonality	Monoclonal antibody
Clone No.	S01-1D7
Isotype	IgG
Purification	Affinity Purified
Applications	WB IHC
Species Reactivity	Human,Mouse,Rat
Immunogen Description	A synthetic peptide of human RASA1
Conjugates	Unconjugated
Modification	Unmodification
Other Names	GAP; PKWS; RASA; p120; CMAVM; CM-AVM; CMAVM1; RASGAP; p120GAP; p120RASGAP
Accession No.	Swiss-Prot:P20936GenelD:5921
Uniprot	P20936
GenelD	5921
Calculated MW	Calculated MW:116 kDa,Observed MW:140 kDa
Concentration	0.3 mg/ml
Formulation	50mM Tris-Glycine(pH 7.4), 0.15M NaCl, 40% Glycerol, 0.01% Sodium azide and 0.05% BSA
Storage	Store at 4°C short term. Aliquot and store at -20°C long term. Avoid freeze/thaw cycles.

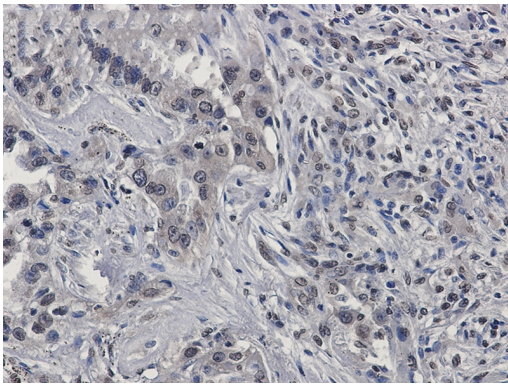
Application Details

WB: 1/1000 IHC: 1/20

Images



Western blot detection of RASA1 in A549,HL-60,U87-MG cell lysates using RASA1 Rabbit mAb(1:1000 diluted).Predicted band size:116kDa.Observed band size:140kDa.



Immunohistochemistry of RASA1 in paraffin-embedded Human lung cancer tissue using RASA1 Rabbit mAb at dilution 1/50

Background

Inhibitory regulator of the Ras-cyclic AMP pathway. Stimulates the GTPase of normal but not oncogenic Ras p21; this stimulation may be further increased in the presence of NCK1.

Note: This product is for in vitro research use only