

RBM3 Rabbit mAb

Catalog No: #52851

Package Size: #52851-1 50ul #52851-2 100ul

Orders: order@signalwayantibody.com

Support: tech@signalwayantibody.com

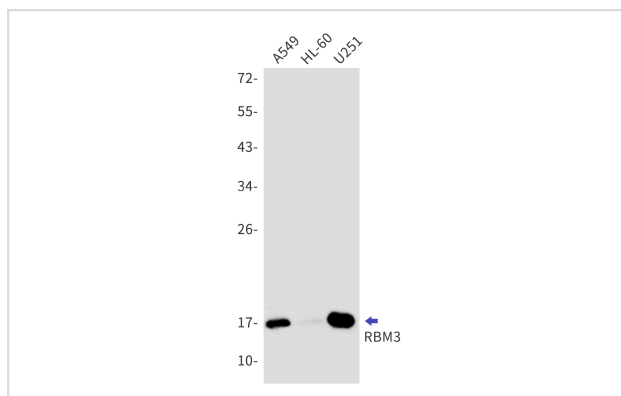
Description

Product Name	RBM3 Rabbit mAb
Host Species	Recombinant Rabbit
Clonality	Monoclonal antibody
Clone No.	S02-0C1
Isotype	IgG
Purification	Affinity Purified
Applications	WB IF
Species Reactivity	Human,Mouse,Rat
Immunogen Description	A synthetic peptide of human RBM3
Conjugates	Unconjugated
Modification	Unmodification
Other Names	RNPL; IS1-RNPL
Accession No.	Swiss-Prot:P98179GenelD:5935
Uniprot	P98179
GenelD	5935
Calculated MW	Calculated MW:17 kDa,Observed MW:17 kDa
Concentration	0.3 mg/ml
Formulation	50mM Tris-Glycine(pH 7.4), 0.15M NaCl, 40% Glycerol, 0.01% Sodium azide and 0.05% BSA
Storage	Store at 4°C short term. Aliquot and store at -20°C long term. Avoid freeze/thaw cycles.

Application Details

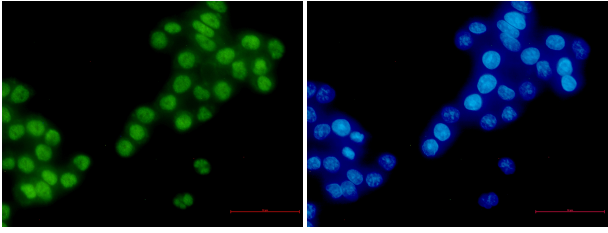
WB: 1/1000 ICC/IF: 1/50

Images



Western blot detection of RBM3 in A549,HL-60,U251 cell lysates using RBM3 Rabbit mAb(1:1000 diluted).Predicted band size:17kDa.Observed band size:17kDa.

Immunocytochemistry of RBM3 (green) in hela using RBM3 Rabbit mAb at dilution 1/50, and DAPI(blue)



Background

Cold-inducible mRNA binding protein that enhances global protein synthesis at both physiological and mild hypothermic temperatures. Reduces the relative abundance of microRNAs, when overexpressed. Enhances phosphorylation of translation initiation factors and active polysome formation (By similarity).

Note: This product is for in vitro research use only