

RGS6 Rabbit mAb

Catalog No: #52852

Package Size: #52852-1 50ul #52852-2 100ul

Orders: order@signalwayantibody.com

Support: tech@signalwayantibody.com

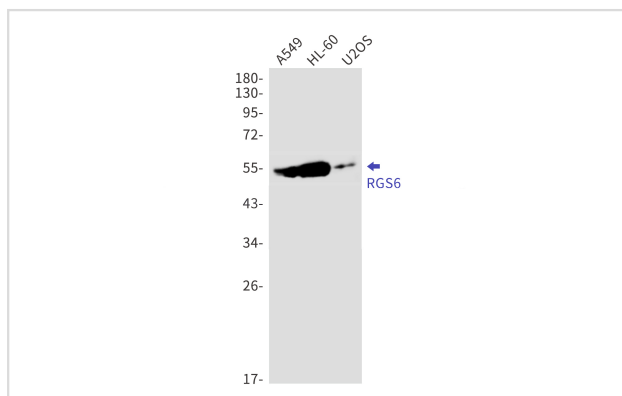
Description

Product Name	RGS6 Rabbit mAb
Host Species	Recombinant Rabbit
Clonality	Monoclonal antibody
Clone No.	S02-1D3
Isotype	IgG
Purification	Affinity Purified
Applications	WB
Species Reactivity	Human,Mouse,Rat
Immunogen Description	A synthetic peptide of human RGS6
Conjugates	Unconjugated
Modification	Unmodification
Other Names	GAP; S914; HA117
Accession No.	Swiss-Prot:P49758GenelD:9628
Uniprot	P49758
GenelD	9628
Calculated MW	Calculated MW:54 kDa,Observed MW:54 kDa
Concentration	0.3 mg/ml
Formulation	50mM Tris-Glycine(pH 7.4), 0.15M NaCl, 40% Glycerol, 0.01% Sodium azide and 0.05% BSA
Storage	Store at 4°C short term. Aliquot and store at -20°C long term. Avoid freeze/thaw cycles.

Application Details

WB: 1/1000

Images



Western blot detection of RGS6 in A549,HL-60,U2OS cell lysates using RGS6 Rabbit mAb(1:1000 diluted).Predicted band size:54kDa.Observed band size:54kDa.

Background

Regulates G protein-coupled receptor signaling cascades. Inhibits signal transduction by increasing the GTPase activity of G protein alpha subunits, thereby driving them into their inactive GDP-bound form. The RGS6/GNB5 dimer enhances GNAO1 GTPase activity (PubMed:10521509).

Note: This product is for in vitro research use only