

## SAP97 Rabbit mAb

Catalog No: #52856

Package Size: #52856-1 50ul #52856-2 100ul

Orders: order@signalwayantibody.com

Support: tech@signalwayantibody.com

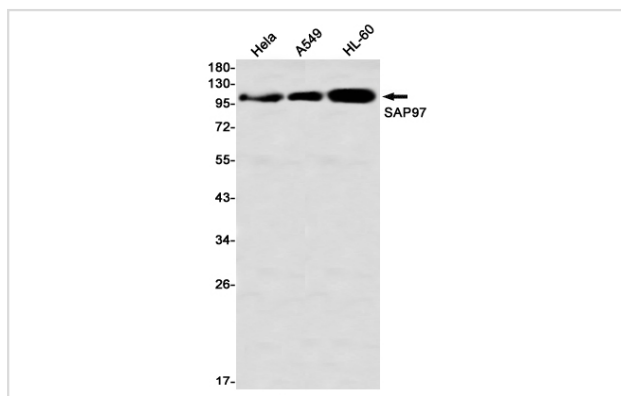
## Description

Product Name	SAP97 Rabbit mAb
Host Species	Recombinant Rabbit
Clonality	Monoclonal antibody
Clone No.	S06-6C8
Isotype	IgG
Purification	Affinity Purified
Applications	WB
Species Reactivity	Human,Mouse,Rat
Immunogen Description	A synthetic peptide of human SAP97
Conjugates	Unconjugated
Modification	Unmodification
Other Names	hdlg; DLGH1; SAP97; SAP-97
Accession No.	Swiss-Prot:Q12959GeneID:1739
Uniprot	Q12959
GeneID	1739
Calculated MW	Calculated MW:101 kDa,Observed MW:101 kDa
Concentration	0.3 mg/ml
Formulation	50mM Tris-Glycine(pH 7.4), 0.15M NaCl, 40% Glycerol, 0.01% Sodium azide and 0.05% BSA
Storage	Store at 4°C short term. Aliquot and store at -20°C long term. Avoid freeze/thaw cycles.

## Application Details

WB: 1/1000

## Images



Western blot detection of SAP97 in HeLa,A549,HL-60 using SAP97 Rabbit mAb(1:1000 diluted)

## Background

---

Essential multidomain scaffolding protein required for normal development (By similarity). Recruits channels, receptors and signaling molecules to discrete plasma membrane domains in polarized cells. May play a role in adherens junction assembly, signal transduction, cell proliferation, synaptogenesis and lymphocyte activation. Regulates the excitability of cardiac myocytes by modulating the functional expression of Kv4 channels. Functional regulator of Kv1.5 channel. During long-term depression in hippocampal neurons, it recruits ADAM10 to the plasma membrane (PubMed:23676497).

---

Note: This product is for in vitro research use only