

SEC24D Rabbit mAb

Catalog No: #52857

Package Size: #52857-1 50ul #52857-2 100ul

Orders: order@signalwayantibody.com

Support: tech@signalwayantibody.com

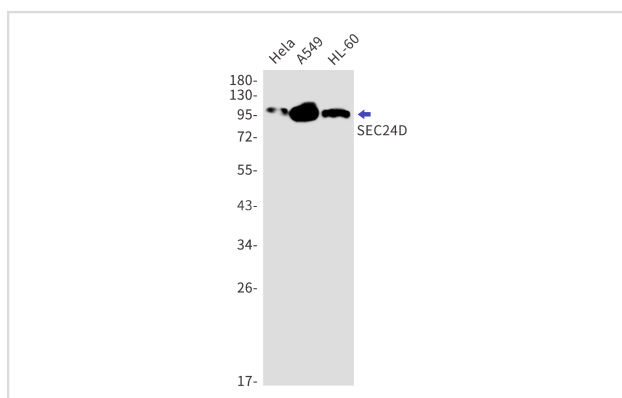
Description

Product Name	SEC24D Rabbit mAb
Host Species	Recombinant Rabbit
Clonality	Monoclonal antibody
Clone No.	S01-5G5
Isotype	IgG
Purification	Affinity Purified
Applications	WB
Species Reactivity	Human,Mouse,Rat
Immunogen Description	A synthetic peptide of human SEC24D
Conjugates	Unconjugated
Modification	Unmodification
Other Names	CLCRP2
Accession No.	Swiss-Prot:O94855GeneID:9871
Uniprot	O94855
GeneID	9871
Calculated MW	Calculated MW:113 kDa,Observed MW:113 kDa
Concentration	0.3 mg/ml
Formulation	50mM Tris-Glycine(pH 7.4), 0.15M NaCl, 40% Glycerol, 0.01% Sodium azide and 0.05% BSA
Storage	Store at 4°C short term. Aliquot and store at -20°C long term. Avoid freeze/thaw cycles.

Application Details

WB: 1/1000

Images



Western blot detection of SEC24D in HeLa,A549,HL-60 cell lysates using SEC24D Rabbit mAb(1:1000 diluted).Predicted band size:113kDa.Observed band size:113kDa.

Background

Component of the coat protein complex II (COPII) which promotes the formation of transport vesicles from the endoplasmic reticulum (ER). The coat has two main functions, the physical deformation of the endoplasmic reticulum membrane into vesicles and the selection of cargo molecules for their transport to the Golgi complex (PubMed:17499046, PubMed:20427317, PubMed:18843296).

Note: This product is for in vitro research use only