

Septin 8 Rabbit mAb

Catalog No: #52858

Package Size: #52858-1 50ul #52858-2 100ul

Orders: order@signalwayantibody.com

Support: tech@signalwayantibody.com

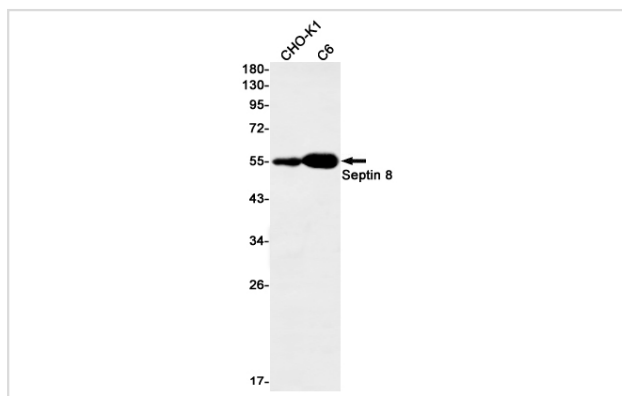
Description

Product Name	Septin 8 Rabbit mAb
Host Species	Recombinant Rabbit
Clonality	Monoclonal antibody
Clone No.	S05-2C6
Isotype	IgG
Purification	Affinity Purified
Applications	WB
Species Reactivity	Human,Mouse,Rat
Immunogen Description	A synthetic peptide of human Septin 8
Conjugates	Unconjugated
Modification	Unmodification
Other Names	SEP2; SEPT8
Accession No.	Swiss-Prot:Q92599GeneID:23176
Uniprot	Q92599
GeneID	23176
Calculated MW	Calculated MW:56 kDa,Observed MW:56 kDa
Concentration	0.3 mg/ml
Formulation	50mM Tris-Glycine(pH 7.4), 0.15M NaCl, 40% Glycerol, 0.01% Sodium azide and 0.05% BSA
Storage	Store at 4°C short term. Aliquot and store at -20°C long term. Avoid freeze/thaw cycles.

Application Details

WB: 1/1000

Images



Western blot detection of Septin 8 in CHO-K1,C6 cell lysates using Septin 8 Rabbit mAb(1:1000 diluted).Predicted band size:56kDa.Observed band size:56kDa.

Background

Filament-forming cytoskeletal GTPase (By similarity). May play a role in platelet secretion (PubMed:15116257). Seems to participate in the process of SNARE complex formation in synaptic vesicles (By similarity).

Note: This product is for in vitro research use only