

## SIRP alpha Rabbit mAb

Catalog No: #52859

Package Size: #52859-1 50ul #52859-2 100ul

Orders: order@signalwayantibody.com

Support: tech@signalwayantibody.com

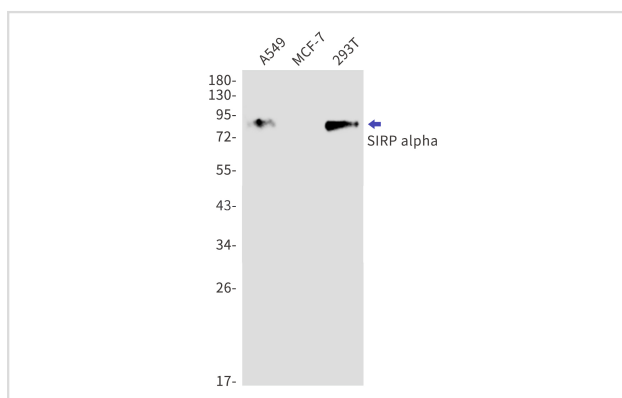
## Description

Product Name	SIRP alpha Rabbit mAb
Host Species	Recombinant Rabbit
Clonality	Monoclonal antibody
Clone No.	S08-1G4
Isotype	IgG
Purification	Affinity Purified
Applications	WB IF
Species Reactivity	Human
Immunogen Description	Recombinant protein of human SIRP alpha
Conjugates	Unconjugated
Modification	Unmodification
Other Names	BIT; MFR; P84; SIRP; MYD-1; SHPS1; CD172A; PTPNS1
Accession No.	Swiss-Prot:P78324GenelD:140885
Uniprot	P78324
GenelD	140885
Calculated MW	Calculated MW:55 kDa,Observed MW:85 kDa
Concentration	0.3 mg/ml
Formulation	50mM Tris-Glycine(pH 7.4), 0.15M NaCl, 40% Glycerol, 0.01% Sodium azide and 0.05% BSA
Storage	Store at 4°C short term. Aliquot and store at -20°C long term. Avoid freeze/thaw cycles.

## Application Details

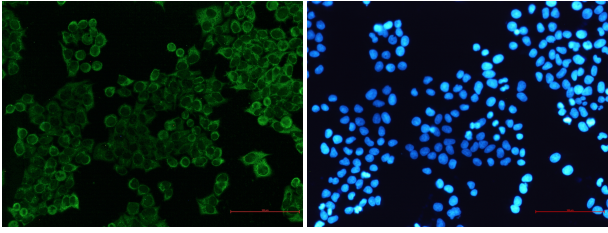
WB: 1/1000 ICC/IF: 1/50

## Images



Western blot detection of SIRP alpha in A549, MCF-7, 293T cell lysates using SIRP alpha Rabbit mAb (1:1000 diluted). Predicted band size: 55 kDa. Observed band size: 85 kDa.

Immunocytochemistry of SIRP alpha (green) in hela using SIRP alpha Rabbit mAb at dilution 1/50, and DAPI(blue)



## Background

The protein encoded by this gene is a member of the signal-regulatory-protein (SIRP) family, and also belongs to the immunoglobulin superfamily. SIRP family members are receptor-type transmembrane glycoproteins known to be involved in the negative regulation of receptor tyrosine kinase-coupled signaling processes. This protein can be phosphorylated by tyrosine kinases. The phospho-tyrosine residues of this PTP have been shown to recruit SH2 domain containing tyrosine phosphatases (PTP), and serve as substrates of PTPs. This protein was found to participate in signal transduction mediated by various growth factor receptors. CD47 has been demonstrated to be a ligand for this receptor protein. This gene and its product share very high similarity with several other members of the SIRP family. These related genes are located in close proximity to each other on chromosome 20p13. Multiple alternatively spliced transcript variants have been determined for this gene. [provided by RefSeq, Jul 2008]

Note: This product is for in vitro research use only