

SLC31A1 Rabbit mAb

Catalog No: #52861

Package Size: #52861-1 50ul #52861-2 100ul

Orders: order@signalwayantibody.com

Support: tech@signalwayantibody.com

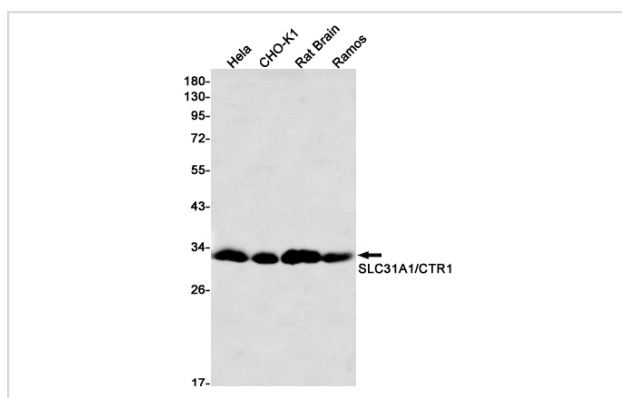
Description

Product Name	SLC31A1 Rabbit mAb
Host Species	Recombinant Rabbit
Clonality	Monoclonal antibody
Clone No.	S06-7G0
Isotype	IgG
Purification	Affinity Purified
Applications	WB
Species Reactivity	Human,Mouse,Rat
Immunogen Description	A synthetic peptide of human SLC31A1/CTR1
Conjugates	Unconjugated
Modification	Unmodification
Other Names	CTR1; COPT1
Accession No.	Swiss-Prot:O15431GeneID:1317
Uniprot	O15431
GeneID	1317
Calculated MW	Calculated MW:21 kDa,Observed MW:26-34 kDa
Concentration	0.3 mg/ml
Formulation	50mM Tris-Glycine(pH 7.4), 0.15M NaCl, 40% Glycerol, 0.01% Sodium azide and 0.05% BSA
Storage	Store at 4°C short term. Aliquot and store at -20°C long term. Avoid freeze/thaw cycles.

Application Details

WB: 1/1000

Images



Western blot detection of SLC31A1/CTR1 in HeLa, CHO-K1, Rat Brain, Ramos cell lysates using SLC31A1/CTR1 Rabbit mAb(1:1000 diluted). Predicted band size:21kDa. Observed band size:21kDa.

Background

High-affinity, saturable copper transporter involved in dietary copper uptake.

Note: This product is for in vitro research use only