

## Superoxide Dismutase 1 Rabbit mAb

Catalog No: #52869

Package Size: #52869-1 50ul #52869-2 100ul

Orders: order@signalwayantibody.com

Support: tech@signalwayantibody.com

## Description

Product Name	Superoxide Dismutase 1 Rabbit mAb
Clone No.	S08-5A5
Isotype	IgG
Purification	Affinity-chromatography
Applications	WB;IHC;ICC/IF;FC
Species Reactivity	Human;Mouse;Rat
Immunogen Description	A synthetic peptide of human Superoxide Dismutase 1
Conjugates	Unconjugated
Modification	Unmodification
Other Names	ALS; SOD; ALS1; IPOA; STAHP; hSod1; HEL-S-44; homodimer
Accession No.	Swiss-Prot:P00441 GeneID:6647
Uniprot	P00441
GeneID	6647
Calculated MW	Calculated MW:16 kDa, Observed MW:18 kDa
Concentration	0.3 mg/ml
Formulation	Rabbit IgG in 10mM phosphate buffered saline , pH 7.4, 150mM sodium chloride, 0.05% BSA, 0.02% sodium azide and 50% glycerol.
Storage	Store at 4°C short term. Aliquot and store at -20°C long term. Avoid freeze/thaw cycles.

## Application Details

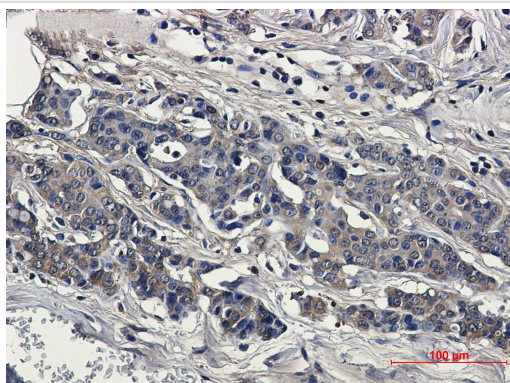
WB 1:1000-1:2000

IHC 1:50-1:200

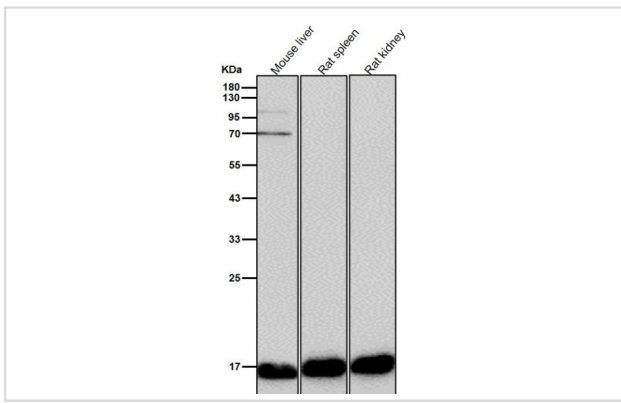
ICC/IF 1:50-1:200

FC 1:20-1:100

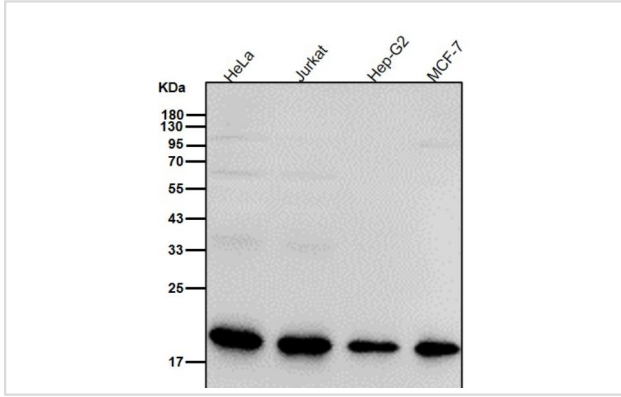
## Images



Immunohistochemical of Superoxide Dismutase 1 in Human breast cancer tissue using Superoxide Dismutase 1 antibody at dilution 1/50



All lanes use the Antibody at 1:2k dilution for 1 hour at room temperature.



All lanes use the Antibody at 1:2k dilution for 1 hour at room temperature.

## Background

Destroys radicals which are normally produced within the cells and which are toxic to biological systems.

Note: This product is for in vitro research use only