

CREB Regulated Transcription Coactivator 2 Rabbit mAb

Catalog No: #52874

Package Size: #52874-1 50ul #52874-2 100ul

Orders: order@signalwayantibody.comSupport: tech@signalwayantibody.com

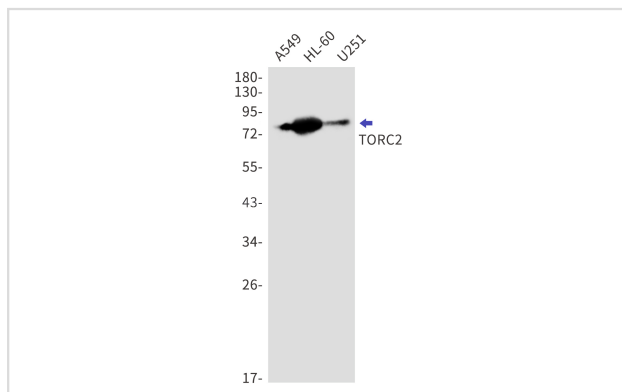
Description

Product Name	CREB Regulated Transcription Coactivator 2 Rabbit mAb
Host Species	Recombinant Rabbit
Clonality	Monoclonal antibody
Clone No.	S08-5F2
Isotype	IgG
Purification	Affinity Purified
Applications	WB IHC
Species Reactivity	Human,Rat
Immunogen Description	A synthetic peptide of human TORC2
Conjugates	Unconjugated
Modification	Unmodification
Other Names	TORC2; TORC-2
Accession No.	Swiss-Prot:Q53ET0GeneID:200186
Uniprot	Q53ET0
GeneID	200186
Calculated MW	Calculated MW:73 kDa,Observed MW:80 kDa
Concentration	0.3 mg/ml
Formulation	50mM Tris-Glycine(pH 7.4), 0.15M NaCl, 40% Glycerol, 0.01% Sodium azide and 0.05% BSA
Storage	Store at 4°C short term. Aliquot and store at -20°C long term. Avoid freeze/thaw cycles.

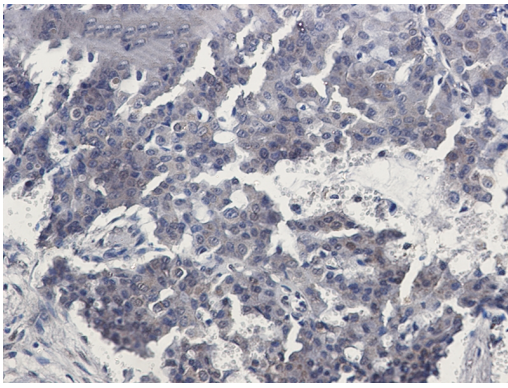
Application Details

WB: 1/1000 IHC: 1/50

Images



Western blot detection of TORC2 in A549,HL-60,U251 cell lysates using TORC2 Rabbit mAb(1:1000 diluted).Predicted band size:73kDa.Observed band size:80kDa.



Immunohistochemistry of TORC2 in paraffin-embedded Human breast cancer tissue using TORC2 Rabbit mAb at dilution 1/50

Background

Transcriptional coactivator for CREB1 which activates transcription through both consensus and variant cAMP response element (CRE) sites. Acts as a coactivator, in the SIK/TORC signaling pathway, being active when dephosphorylated and acts independently of CREB1 'Ser-133' phosphorylation. Enhances the interaction of CREB1 with TAF4. Regulates gluconeogenesis as a component of the LKB1/AMPK/TORC2 signaling pathway. Regulates the expression of specific genes such as the steroidogenic gene, StAR. Potent coactivator of PPARGC1A and inducer of mitochondrial biogenesis in muscle cells. Also coactivator for TAX activation of the human T-cell leukemia virus type 1 (HTLV-1) long terminal repeats (LTR).

Note: This product is for in vitro research use only