

## TPX2 Rabbit mAb

Catalog No: #52876

Package Size: #52876-1 50ul #52876-2 100ul

Orders: order@signalwayantibody.com

Support: tech@signalwayantibody.com

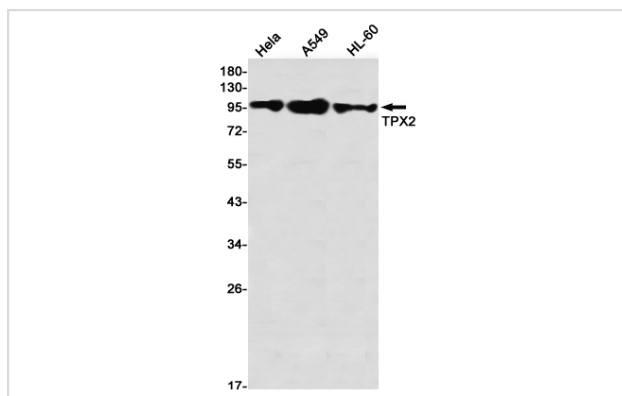
## Description

Product Name	TPX2 Rabbit mAb
Host Species	Recombinant Rabbit
Clonality	Monoclonal antibody
Clone No.	S01-8A6
Isotype	IgG
Purification	Affinity Purified
Applications	WB IHC IF
Species Reactivity	Human
Immunogen Description	A synthetic peptide of human TPX2
Conjugates	Unconjugated
Modification	Unmodification
Other Names	DIL2; p100; DIL-2; HCTP4; FLS353; HCA519; REPP86; C20orf1; C20orf2; GD:C20orf1
Accession No.	Swiss-Prot:Q9ULW0GenelD:22974
Uniprot	Q9ULW0
GenelD	22974
Calculated MW	Calculated MW:86 kDa,Observed MW:100 kDa
Concentration	0.3 mg/ml
Formulation	50mM Tris-Glycine(pH 7.4), 0.15M NaCl, 40% Glycerol, 0.01% Sodium azide and 0.05% BSA
Storage	Store at 4°C short term. Aliquot and store at -20°C long term. Avoid freeze/thaw cycles.

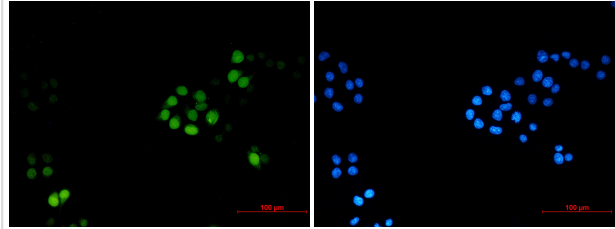
## Application Details

WB: 1/1000 IHC: 1/500 ICC/IF: 1/20

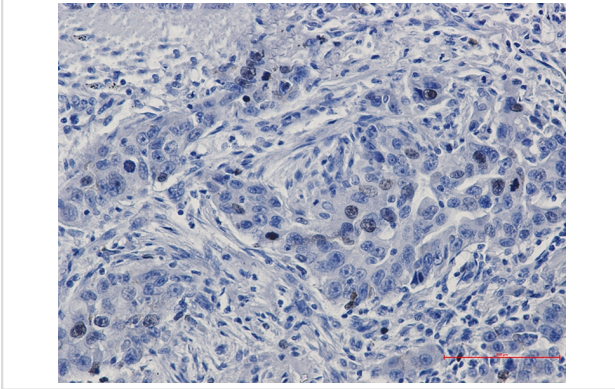
## Images



Western blot detection of TPX2 in HeLa,A549,HL-60 using TPX2 Rabbit mAb(1:1000 diluted)



Immunocytochemistry of TPX2 (green) in HeLa using TPX2 antibody at dilution 1/2, and DAPI(blue)



Immunohistochemistry of TPX2 in paraffin-embedded Human lung cancer tissue using TPX2 Rabbit mAb at dilution 1/50

## Background

Spindle assembly factor required for normal assembly of mitotic spindles. Required for normal assembly of microtubules during apoptosis. Required for chromatin and/or kinetochore dependent microtubule nucleation. Mediates AURKA localization to spindle microtubules (PubMed:18663142, PubMed:19208764).

Note: This product is for in vitro research use only