

TRAPPC2 Rabbit mAb

Catalog No: #52877

Package Size: #52877-1 50ul #52877-2 100ul

Orders: order@signalwayantibody.com

Support: tech@signalwayantibody.com

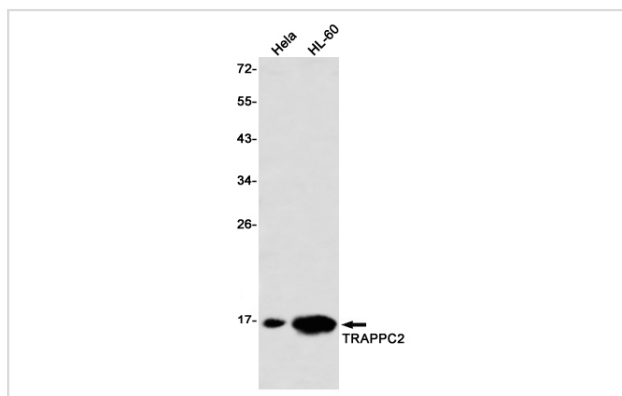
Description

Product Name	TRAPPC2 Rabbit mAb
Host Species	Recombinant Rabbit
Clonality	Monoclonal antibody
Clone No.	S02-4G4
Isotype	IgG
Purification	Affinity Purified
Applications	WB
Species Reactivity	Human,Mouse,Rat
Immunogen Description	A synthetic peptide of human TRAPPC2
Conjugates	Unconjugated
Modification	Unmodification
Other Names	SEDL; SEDT; MIP2A; TRS20; ZNF547L; hYP38334; TRAPPC2P1
Accession No.	Swiss-Prot:P0DI81GenelD:6399
Uniprot	P0DI81
GenelD	6399
Calculated MW	Calculated MW:16 kDa,Observed MW:16 kDa
Concentration	0.3 mg/ml
Formulation	50mM Tris-Glycine(pH 7.4), 0.15M NaCl, 40% Glycerol, 0.01% Sodium azide and 0.05% BSA
Storage	Store at 4°C short term. Aliquot and store at -20°C long term. Avoid freeze/thaw cycles.

Application Details

WB: 1/1000

Images



Western blot detection of TRAPPC2 in HeLa,HL-60 using TRAPPC2 Rabbit mAb(1:1000 diluted)

Background

Prevents transcriptional repression and induction of cell death by ENO1 (By similarity). May play a role in vesicular transport from endoplasmic reticulum to Golgi.

Note: This product is for in vitro research use only