

Tuberin Rabbit mAb

Catalog No: #52879

Package Size: #52879-1 50ul #52879-2 100ul

Orders: order@signalwayantibody.com

Support: tech@signalwayantibody.com

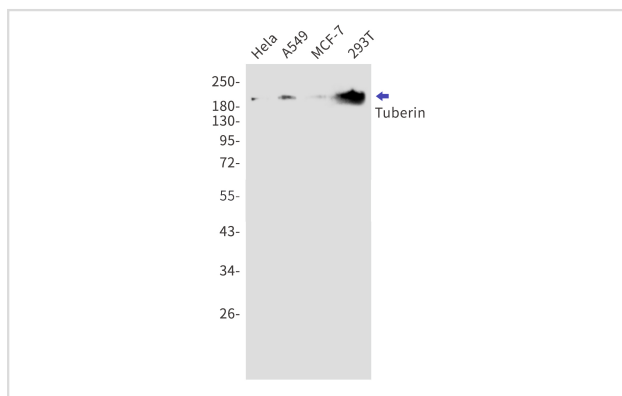
Description

Product Name	Tuberin Rabbit mAb
Host Species	Recombinant Rabbit
Clonality	Monoclonal antibody
Clone No.	S06-0D3
Isotype	IgG
Purification	Affinity Purified
Applications	WB IHC
Species Reactivity	Human
Immunogen Description	A synthetic peptide of human Tuberin
Conjugates	Unconjugated
Modification	Unmodification
Other Names	TSC2; Tuberous sclerosis 2 homolog protein; Tuberous sclerosis 2 protein; Tuberin;TSC4
Accession No.	Swiss-Prot:P49815GenelD:7249
Uniprot	P49815
GenelD	7249
Calculated MW	Calculated MW:201 kDa,Observed MW:201 kDa
Concentration	0.3 mg/ml
Formulation	50mM Tris-Glycine(pH 7.4), 0.15M NaCl, 40% Glycerol, 0.01% Sodium azide and 0.05% BSA
Storage	Store at 4°C short term. Aliquot and store at -20°C long term. Avoid freeze/thaw cycles.

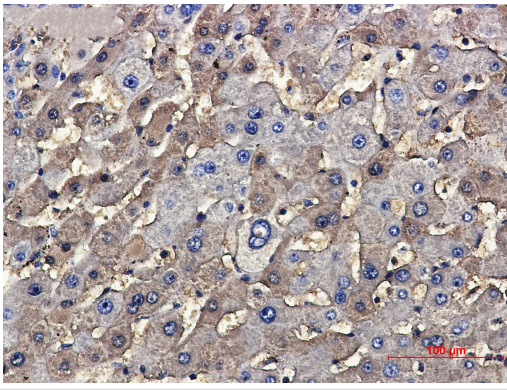
Application Details

WB: 1/1000 IHC: 1/20

Images



Western blot detection of Tuberin in HeLa,A549,MCF-7,293T cell lysates using Tuberin Rabbit mAb(1:1000 diluted).Predicted band size:201kDa.Observed band size:201kDa.



Immunohistochemical of Tuberin in Human hepatic carcinoma tissue using Tuberin antibody at dilution 1/50

Background

Mutations in this gene lead to tuberous sclerosis complex. Its gene product is believed to be a tumor suppressor and is able to stimulate specific GTPases. The protein associates with hamartin in a cytosolic complex, possibly acting as a chaperone for hamartin. Alternative splicing results in multiple transcript variants encoding different isoforms. [provided by RefSeq, Jul 2008]

Note: This product is for in vitro research use only