

NEDD8 Activating Enzyme E1C Rabbit mAb

Catalog No: #52880

Package Size: #52880-1 50ul #52880-2 100ul

Orders: order@signalwayantibody.com

Support: tech@signalwayantibody.com

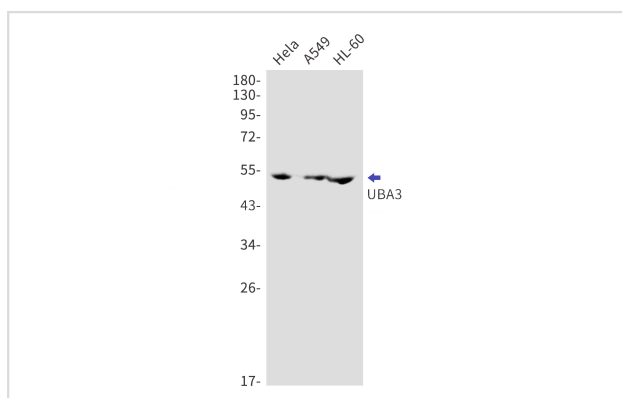
Description

Product Name	NEDD8 Activating Enzyme E1C Rabbit mAb
Host Species	Recombinant Rabbit
Clonality	Monoclonal antibody
Clone No.	S05-6C8
Isotype	IgG
Purification	Affinity Purified
Applications	WB
Species Reactivity	Human,Mouse,Rat
Immunogen Description	A synthetic peptide of human UBA3
Conjugates	Unconjugated
Modification	Unmodification
Other Names	NAE2; UBE1C; hUBA3
Accession No.	Swiss-Prot:Q8TBC4GeneID:9039
Uniprot	Q8TBC4
GeneID	9039
Calculated MW	Calculated MW:52 kDa,Observed MW:52 kDa
Concentration	0.3 mg/ml
Formulation	50mM Tris-Glycine(pH 7.4), 0.15M NaCl, 40% Glycerol, 0.01% Sodium azide and 0.05% BSA
Storage	Store at 4°C short term. Aliquot and store at -20°C long term. Avoid freeze/thaw cycles.

Application Details

WB: 1/2000-1/10000

Images



Western blot detection of UBA3 in HeLa,A549,HL-60 cell lysates using UBA3 Rabbit mAb(1:1000 diluted).Predicted band size:52kDa.Observed band size:52kDa.

Background

Catalytic subunit of the dimeric UBA3-NAE1 E1 enzyme. E1 activates NEDD8 by first adenylating its C-terminal glycine residue with ATP, thereafter linking this residue to the side chain of the catalytic cysteine, yielding a NEDD8-UBA3 thioester and free AMP. E1 finally transfers NEDD8 to the catalytic cysteine of UBE2M. Down-regulates steroid receptor activity. Necessary for cell cycle progression.

Note: This product is for in vitro research use only