

## XRCC1 Rabbit mAb

Catalog No: #52888

Package Size: #52888-1 50ul #52888-2 100ul

Orders: [order@signalwayantibody.com](mailto:order@signalwayantibody.com)Support: [tech@signalwayantibody.com](mailto:tech@signalwayantibody.com)

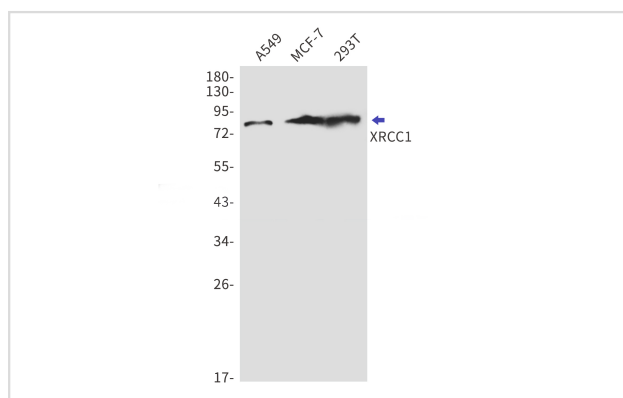
## Description

Product Name	XRCC1 Rabbit mAb
Host Species	Recombinant Rabbit
Clonality	Monoclonal antibody
Clone No.	S02-0B0
Isotype	IgG
Purification	Affinity Purified
Applications	WB IF
Species Reactivity	Human,Mouse,Rat
Immunogen Description	A synthetic peptide of human XRCC1
Conjugates	Unconjugated
Modification	Unmodification
Other Names	RCC; SCAR26
Accession No.	Swiss-Prot:P18887GenelD:7515
Uniprot	P18887
GenelD	7515
Calculated MW	Calculated MW:70 kDa,Observed MW:82 kDa
Concentration	0.3 mg/ml
Formulation	50mM Tris-Glycine(pH 7.4), 0.15M NaCl, 40% Glycerol, 0.01% Sodium azide and 0.05% BSA
Storage	Store at 4°C short term. Aliquot and store at -20°C long term. Avoid freeze/thaw cycles.

## Application Details

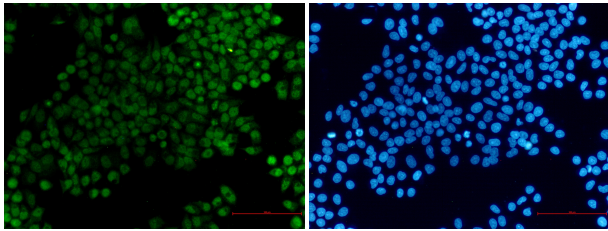
WB: 1/1000 ICC/IF: 1/50

## Images



Western blot detection of XRCC1 in A549,MCF-7,293T cell lysates using XRCC1 Rabbit mAb(1:1000 diluted).Predicted band size:70kDa.Observed band size:82kDa.

Immunocytochemistry of XRCC1 (green) in hela using XRCC1 Rabbit mAb at dilution 1/50, and DAPI(blue)



## Background

The protein encoded by this gene is involved in the efficient repair of DNA single-strand breaks formed by exposure to ionizing radiation and alkylating agents. This protein interacts with DNA ligase III, polymerase beta and poly (ADP-ribose) polymerase to participate in the base excision repair pathway. It may play a role in DNA processing during meiosis and recombination in germ cells. A rare microsatellite polymorphism in this gene is associated with cancer in patients of varying radiosensitivity. [provided by RefSeq, Jul 2008]

Note: This product is for in vitro research use only