

MEF2A/MEF2C Rabbit mAb

Catalog No: #52891

Package Size: #52891-1 50ul #52891-2 100ul

Orders: order@signalwayantibody.com

Support: tech@signalwayantibody.com

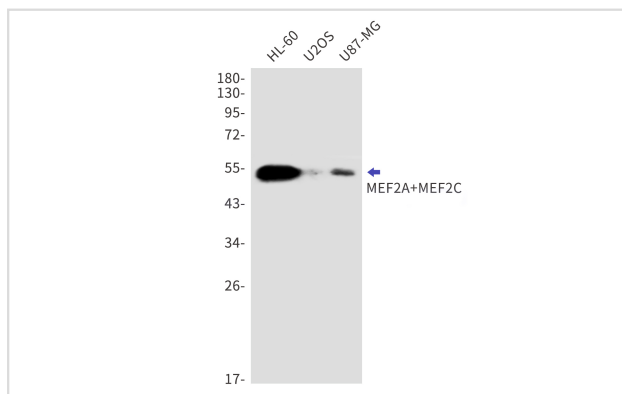
Description

Product Name	MEF2A/MEF2C Rabbit mAb
Host Species	Recombinant Rabbit
Clonality	Monoclonal antibody
Clone No.	S04-8B2
Isotype	IgG
Purification	Affinity Purified
Applications	WB
Species Reactivity	Human,Mouse,Rat
Immunogen Description	A synthesized peptide derived from human MEF2A+MEF2C
Conjugates	Unconjugated
Modification	Unmodification
Other Names	ADCAD1; MEF2; MEF2A; Myocyte enhancer factor 2A; RSRFC:4; RSRFC:9;
Accession No.	Swiss-Prot:Q06413 Q02078GeneID:
Uniprot	Q06413 Q02078
Calculated MW	51kDa
Concentration	0.3 mg/ml
Formulation	50mM Tris-Glycine(pH 7.4), 0.15M NaCl, 40% Glycerol, 0.01% Sodium azide and 0.05% BSA
Storage	Store at 4°C short term. Aliquot and store at -20°C long term. Avoid freeze/thaw cycles.

Application Details

WB: 1/500-1/2000

Images



Western blot detection of MEF2A+MEF2C in HL-60,U2OS,U87-MG cell lysates using MEF2A+MEF2C Rabbit mAb(1:1000 diluted).Observed band size:51kDa.

Background

Swiss-Prot Acc.Q06413,Q02078.Transcription activator which binds specifically to the MEF2 element present in the regulatory regions of many

muscle-specific genes. Controls cardiac morphogenesis and myogenesis, and is also involved in vascular development. Plays an essential role in hippocampal-dependent learning and memory by suppressing the number of excitatory synapses and thus regulating basal and evoked synaptic transmission. Crucial for normal neuronal development, distribution, and electrical activity in the neocortex.

Note: This product is for in vitro research use only