

## Human IgG4 Rabbit mAb

Catalog No: #52893

Package Size: #52893-1 50ul #52893-2 100ul

Orders: order@signalwayantibody.com

Support: tech@signalwayantibody.com

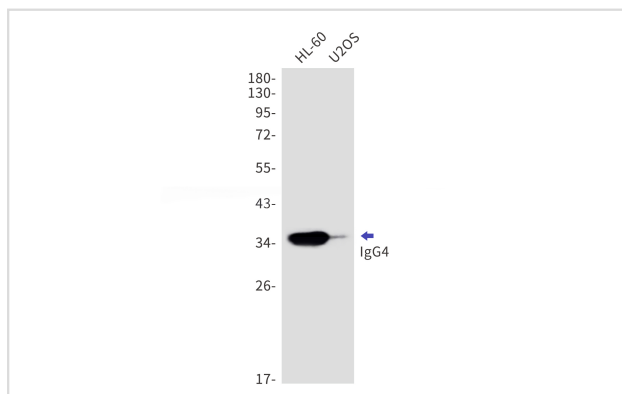
## Description

Product Name	Human IgG4 Rabbit mAb
Host Species	Recombinant Rabbit
Clonality	Monoclonal antibody
Clone No.	S08-6H4
Isotype	IgG
Purification	Affinity Purified
Applications	WB IHC
Species Reactivity	Human
Immunogen Description	A synthesized peptide derived from human IgG4
Conjugates	Unconjugated
Modification	Unmodification
Other Names	Ig gamma 4 chain C region; IGHG4; IGG4;
Accession No.	Swiss-Prot:P01861GenelD:
Uniprot	P01861
Calculated MW	36kDa
Concentration	0.3 mg/ml
Formulation	50mM Tris-Glycine(pH 7.4), 0.15M NaCl, 40% Glycerol, 0.01% Sodium azide and 0.05% BSA
Storage	Store at 4°C short term. Aliquot and store at -20°C long term. Avoid freeze/thaw cycles.

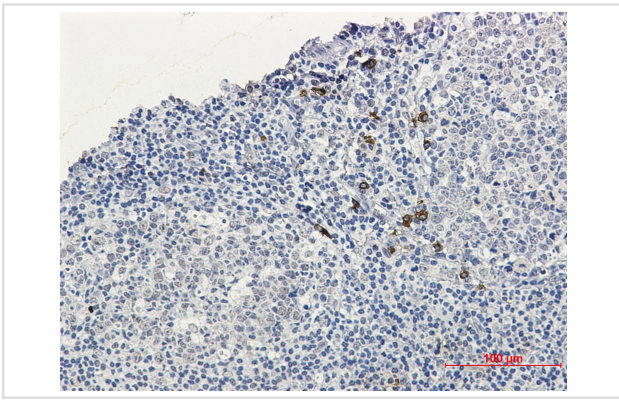
## Application Details

WB: 1/1000-1/2000 IHC: 1/500-1/1000

## Images



Western blot detection of IgG4 in HL-60,U2OS cell lysates using IgG4 Rabbit mAb(1:1000 diluted).Observed band size:36kDa.



Immunohistochemical of IgG4 in Human tonsil tissue using IgG4 antibody at dilution 1/50

## Background

Swiss-Prot Acc.P01861.IgG4 antibodies will dominate the IgG response in schistosomiasis, lymphatic filariasis, and in patients after allergen immunotherapy. Unlike the other IgG subclasses, IgG4 does not activate complement. A combined IgA-IgG4 deficiency has been associated with recurrent pyogenic infections.

Note: This product is for in vitro research use only