

## KDM4A Rabbit mAb

Catalog No: #52896

Package Size: #52896-1 50ul #52896-2 100ul

Orders: order@signalwayantibody.com

Support: tech@signalwayantibody.com

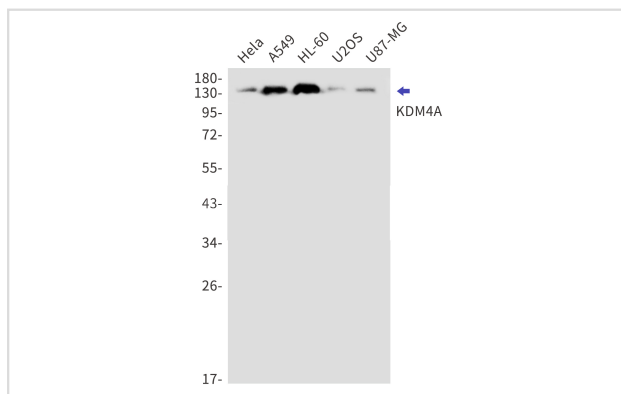
## Description

Product Name	KDM4A Rabbit mAb
Host Species	Recombinant Rabbit
Clonality	Monoclonal antibody
Clone No.	S01-7F2
Isotype	IgG
Purification	Affinity Purified
Applications	WB
Species Reactivity	Human,Mouse,Rat
Immunogen Description	A synthesized peptide derived from human KDM4A / JHDM3A / JMJD2A
Conjugates	Unconjugated
Modification	Unmodification
Other Names	JHDM3A; JMJD2; JMJD2A; KDM4A; TDRD14A;
Accession No.	Swiss-Prot:O75164GeneID:
Uniprot	O75164
Calculated MW	150kDa
Concentration	0.3 mg/ml
Formulation	50mM Tris-Glycine(pH 7.4), 0.15M NaCl, 40% Glycerol, 0.01% Sodium azide and 0.05% BSA
Storage	Store at 4°C short term. Aliquot and store at -20°C long term. Avoid freeze/thaw cycles.

## Application Details

WB: 1/500-1/2000

## Images



Western blot detection of KDM4A in HeLa,A549,HL-60,U2OS,U87-MG cell lysates using KDM4A Rabbit mAb(1:1000 diluted).Observed band size:150kDa.

## Background

Swiss-Prot Acc.O75164.Histone demethylase that specifically demethylates &#39;Lys-9&#39; and &#39;Lys-36&#39; residues of histone H3, thereby

playing a central role in histone code. Does not demethylate histone H3 &#39;Lys-4&#39;, H3 &#39;Lys-27&#39; nor H4 &#39;Lys-20&#39;.  
Demethylates trimethylated H3 &#39;Lys-9&#39; and H3 &#39;Lys-36&#39; residue, while it has no activity on mono- and dimethylated residues.

---

Note: This product is for in vitro research use only