

Cyclin A1/A2 Rabbit mAb

Catalog No: #52897

Package Size: #52897-1 50ul #52897-2 100ul

Orders: order@signalwayantibody.com

Support: tech@signalwayantibody.com

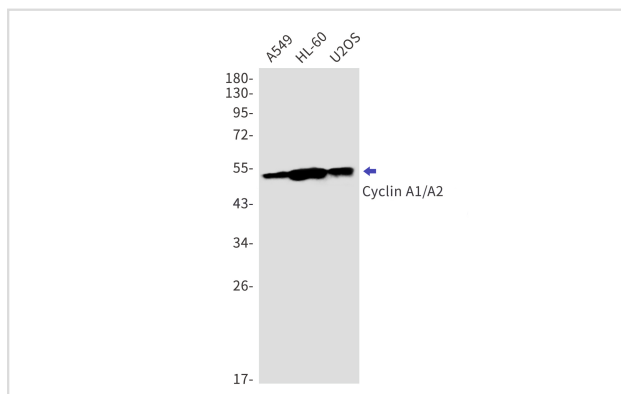
Description

Product Name	Cyclin A1/A2 Rabbit mAb
Host Species	Recombinant Rabbit
Clonality	Monoclonal antibody
Clone No.	S07-3D4
Isotype	IgG
Purification	Affinity Purified
Applications	WB
Species Reactivity	Human
Immunogen Description	A synthesized peptide derived from human Cyclin A1/A2
Conjugates	Unconjugated
Modification	Unmodification
Other Names	CCN1; CCNA; CCNA1; CCNA2; CT146; Cyclin-A; Cyclin-A1; Cyclin-A2;
Accession No.	Swiss-Prot:P20248 P78396GeneID:
Uniprot	P20248 P78396
Calculated MW	52,49kDa
Concentration	0.3 mg/ml
Formulation	50mM Tris-Glycine(pH 7.4), 0.15M NaCl, 40% Glycerol, 0.01% Sodium azide and 0.05% BSA
Storage	Store at 4°C short term. Aliquot and store at -20°C long term. Avoid freeze/thaw cycles.

Application Details

WB: 1/500-1/1000

Images



Western blot detection of Cyclin A1/A2 in A549,HL-60,U2OS cell lysates using Cyclin A1/A2 Rabbit mAb(1:1000 diluted).Observed band size:52,49kDa.

Background

Swiss-Prot Acc.P20248,P78396.May primarily function in the control of the germline meiotic cell cycle and additionally in the control of mitotic cell

cycle in some somatic cells. Essential for the control of the cell cycle at the G1/S (start) and the G2/M (mitosis) transitions.

Note: This product is for in vitro research use only