

## Maltose Binding Protein Rabbit mAb

Catalog No: #52898

Package Size: #52898-1 50ul #52898-2 100ul

Orders: order@signalwayantibody.com

Support: tech@signalwayantibody.com

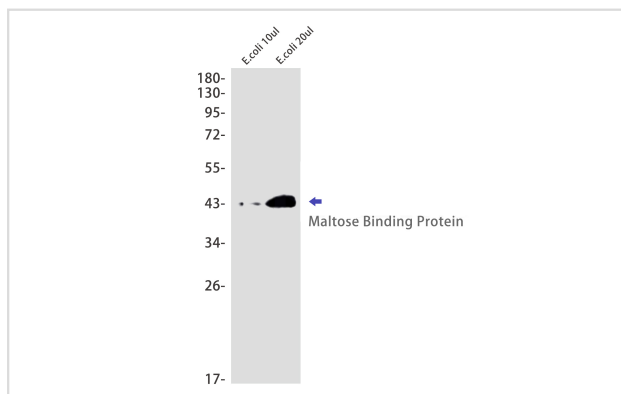
## Description

Product Name	Maltose Binding Protein Rabbit mAb
Host Species	Recombinant Rabbit
Clonality	Monoclonal antibody
Clone No.	S02-6F4
Isotype	IgG
Purification	Affinity Purified
Applications	WB
Species Reactivity	Escherichia Coli
Immunogen Description	A synthesized peptide derived from human Maltose Binding Protein
Conjugates	Unconjugated
Modification	Unmodification
Other Names	ECK4026;MalE;malJ;Maltodextrin binding protein;MMBP;Periplasmic maltose binding protein;
Accession No.	Swiss-Prot:P0AEX9GeneID:
Uniprot	P0AEX9
Calculated MW	43kDa
Concentration	0.3 mg/ml
Formulation	50mM Tris-Glycine(pH 7.4), 0.15M NaCl, 40% Glycerol, 0.01% Sodium azide and 0.05% BSA
Storage	Store at 4°C short term. Aliquot and store at -20°C long term. Avoid freeze/thaw cycles.

## Application Details

WB: 1/500-1/2000

## Images



Western Bolot analysis of MBP in E.coli using MBP Rabbit mAb at dilution 1/1000

## Background

Swiss-Prot Acc.P0AEX9.Involved in the high-affinity maltose membrane transport system MalEFGK. Initial receptor for the active transport of and

chemotaxis toward maltooligosaccharides.

---

Note: This product is for in vitro research use only