

## DDT Rabbit Polyclonal Antibody

Catalog No: #54063

Package Size: #54063-1 50ul #54063-2 100ul

Orders: order@signalwayantibody.com

Support: tech@signalwayantibody.com

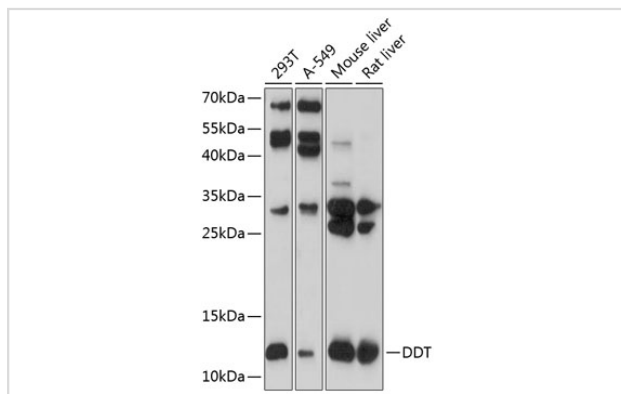
## Description

Product Name	DDT Rabbit Polyclonal Antibody
Host Species	Rabbit
Clonality	Polyclonal
Isotype	IgG
Purification	Affinity purification
Applications	WB
Species Reactivity	Human,Mouse,Rat
Immunogen Description	Recombinant fusion protein of human DDT (NP_001346.1).
Other Names	DDT;DDCT
Accession No.	Swiss Prot:P30046GenelD:1652
Uniprot	P50750
GeneID	1025
Calculated MW	11kDa/12kDa
SDS-PAGE MW	13kDa
Formulation	Buffer: PBS with 0.02% sodium azide,50% glycerol,pH7.3.
Storage	Store at -20°C. Avoid freeze / thaw cycles.

## Application Details

WB □ 1:200 - 1:2000

## Images



Western blot analysis of extracts of various cell lines, using DDT at 1:1000 dilution.

## Background

D-dopachrome tautomerase converts D-dopachrome into 5,6-dihydroxyindole. The DDT gene is related to the migration inhibitory factor (MIF) in terms of sequence, enzyme activity, and gene structure. DDT and MIF are closely linked on chromosome 22.

---

Note: This product is for in vitro research use only