

SHMT1 Rabbit Polyclonal Antibody

Catalog No: #54335

Package Size: #54335-1 50ul #54335-2 100ul

Orders: order@signalwayantibody.comSupport: tech@signalwayantibody.com

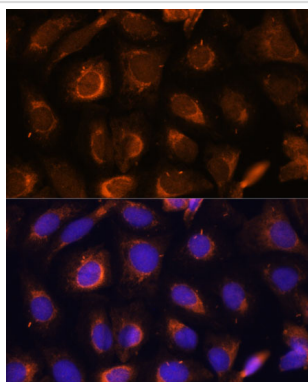
Description

Product Name	SHMT1 Rabbit Polyclonal Antibody
Host Species	Rabbit
Clonality	Polyclonal
Isotype	IgG
Purification	Affinity purification
Applications	WB,IF
Species Reactivity	Human,Mouse,Rat
Immunogen Description	Recombinant fusion protein of human SHMT1 (NP_683718.1).
Other Names	SHMT1;CSHMT;SHMT
Accession No.	Swiss Prot:P34896Gene ID:6470
Uniprot	P34896
GeneID	6470
Calculated MW	37kDa/44kDa/49kDa/53kDa
SDS-PAGE MW	Refer to figures
Formulation	Buffer: PBS with 0.02% sodium azide,50% glycerol,pH7.3.
Storage	Store at -20°C. Avoid freeze / thaw cycles.

Application Details

WB□1:500 - 1:2000IF□1:50 - 1:200

Images



Immunofluorescence analysis of U-2 OS cells using SHMT1 antibody.

Background

This gene encodes the cytosolic form of serine hydroxymethyltransferase, a pyridoxal phosphate-containing enzyme that catalyzes the reversible conversion of serine and tetrahydrofolate to glycine and 5,10-methylene tetrahydrofolate. This reaction provides one-carbon units for synthesis of methionine, thymidylate, and purines in the cytoplasm. This gene is located within the Smith-Magenis syndrome region on chromosome 17. A

pseudogene of this gene is located on the short arm of chromosome 1. Alternative splicing results in multiple transcript variants.

Note: This product is for in vitro research use only