

SLC5A2 Rabbit Polyclonal Antibody

Catalog No: #54662



Package Size: #54662-1 50ul #54662-2 100ul

Orders: order@signalwayantibody.com
Support: tech@signalwayantibody.com

Description

Product Name	SLC5A2 Rabbit Polyclonal Antibody
Host Species	Rabbit
Clonality	Polyclonal
Isotype	IgG
Purification	Affinity purification
Applications	WB,IHC,IF
Species Reactivity	Human,Mouse,Rat
Immunogen Description	Recombinant protein of human SLC5A2.
Other Names	SGLT2
Accession No.	Uniprot:P31639GenelD:6524
Uniprot	P31639
GenelD	6524
Calculated MW	—
SDS-PAGE MW	70KDa
Formulation	PBS with 0.01% thimerosal,50% glycerol,pH7.3.
Storage	Store at -20°C. Avoid freeze / thaw cycles.

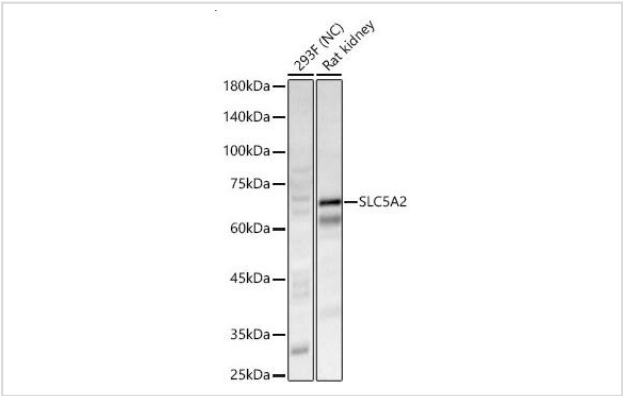
Application Details

WB□1:500 - 1:2000

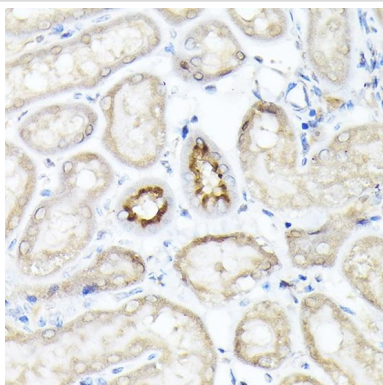
IHC□1:50 - 1:200

IF□1:50 - 1:200

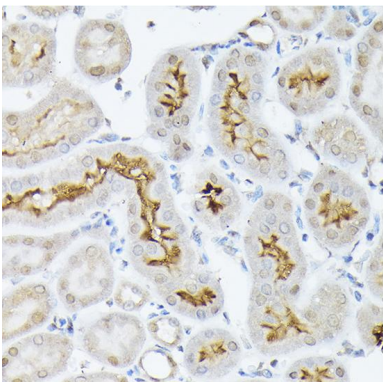
Images



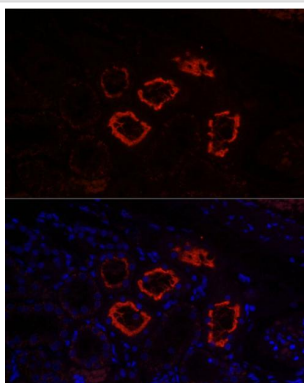
Western blot analysis of various lysates, using SLC5A2 Rabbit pAb



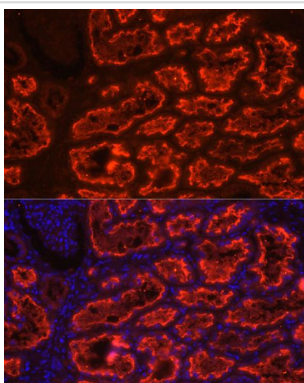
Immunohistochemistry analysis of SLC5A2 in paraffin-embedded mouse kidney using SLC5A2 Rabbit pAb



Immunohistochemistry analysis of SLC5A2 in paraffin-embedded rat kidney using SLC5A2 Rabbit pAb



Immunofluorescence analysis of paraffin-embedded Rat kidney using SLC5A2 Rabbit pAb



Immunofluorescence analysis of paraffin-embedded Human kidney using SLC5A2 Rabbit pAb

Background

This gene encodes a member of the sodium glucose cotransporter family which are sodium-dependent glucose transport proteins. The encoded protein is the major cotransporter involved in glucose reabsorption in the kidney. Mutations in this gene are associated with renal glucosuria. Two transcript variants, one protein-coding and one not, have been found for this gene.

Note: This product is for in vitro research use only