

B-raf Antibody

Catalog No: #25128

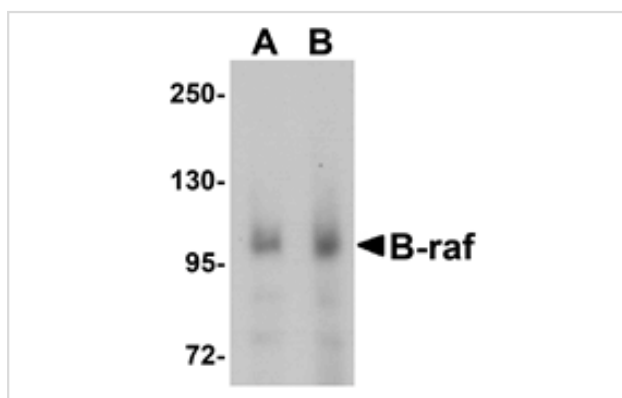
Orders: order@signalwayantibody.com

Support: tech@signalwayantibody.com

Description

Product Name	B-raf Antibody
Host Species	Chicken
Clonality	Polyclonal
Purification	Affinity chromatography purified via peptide column
Applications	ELISA WB
Species Reactivity	Hu Ms Rt
Immunogen Type	Peptide
Immunogen Description	Raised against an 18 amino acid peptide near the center of human B-raf.
Target Name	B-raf
Other Names	v-raf murine sarcoma viral oncogene homolog B1, proto-oncogene B-raf, p94
Accession No.	P15056
Uniprot	P15056
GeneID	673;
Concentration	1mg/ml
Formulation	Supplied in PBS containing 0.02% sodium azide.
Storage	Can be stored at -20°C, stable for one year. As with all antibodies care should be taken to avoid repeated freeze thaw cycles. Antibodies should not be exposed to prolonged high temperatures.

Images



Western blot analysis of B-raf in human brain tissue lysate with B-raf antibody at (A) 1 and (B) 2 ug/mL.

Background

B-raf belongs to the raf/mil family of serine/threonine protein kinases and plays a role in regulating the MAP kinase/ERKs signaling pathway, which affects cell division, differentiation, and secretion. The Ras/Raf/MEK/ERK and Ras/PI3K/PTEN/Akt pathways interact with each other to regulate growth and in some cases tumorigenesis. Mutations in B-raf have been associated with several cancers, including non-Hodgkin lymphoma, colorectal cancer, malignant melanoma, thyroid carcinoma, non-small cell lung carcinoma, and adenocarcinoma of lung, leading to speculation on the possibility of B-raf as a therapeutic target for treating cancers. Mutations in this gene have also been associated with cardiofaciocutaneous syndrome (CFCS), a disease characterized by heart defects, mental retardation and a distinctive facial appearance.

Note: This product is for in vitro research use only