

## IFITM1 Antibody

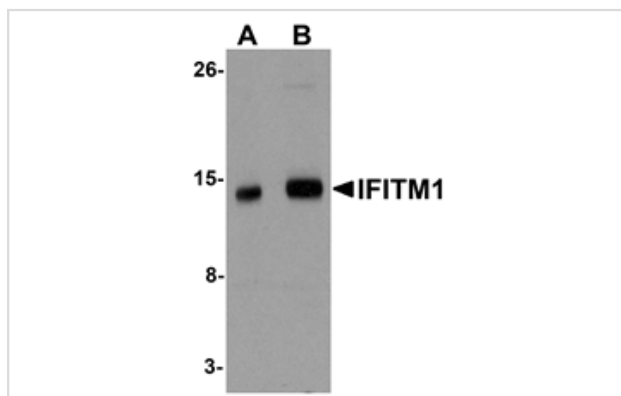
Catalog No: #25136

Orders: [order@signalwayantibody.com](mailto:order@signalwayantibody.com)Support: [tech@signalwayantibody.com](mailto:tech@signalwayantibody.com)

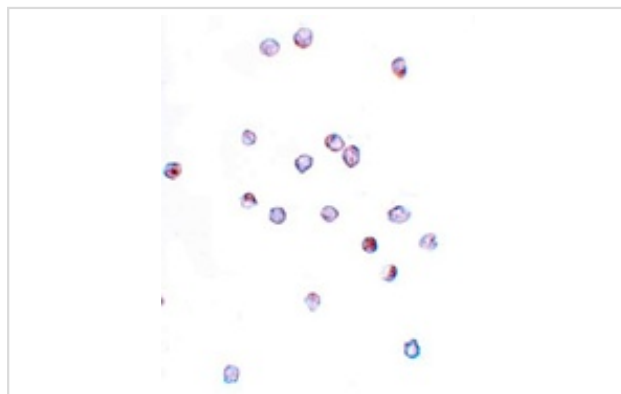
## Description

Product Name	IFITM1 Antibody
Host Species	Rabbit
Clonality	Polyclonal
Purification	Affinity chromatography purified via peptide column
Applications	ELISA WB ICC
Species Reactivity	Hu Ms Rt
Immunogen Type	Peptide
Immunogen Description	Raised against a 16 amino acid peptide near the center of human IFITM1.
Target Name	IFITM1
Other Names	Interferon induced transmembrane protein 1, Interferon-induced protein 17, CD225, 9-27, LEU13, IFI17
Accession No.	Swiss-Prot:P13164Gene ID:8519
Uniprot	P13164
GeneID	8519;
Concentration	1mg/ml
Formulation	Supplied in PBS containing 0.02% sodium azide.
Storage	Can be stored at -20°C, stable for one year. As with all antibodies care should be taken to avoid repeated freeze thaw cycles. Antibodies should not be exposed to prolonged high temperatures.

## Images



Western blot analysis of IFITM1 in 3T3 cell lysate with IFITM1 antibody at (A) 1 and (B) 2 ug/mL.



Immunocytochemistry of IFITM1 in Jurkat cells with IFITM1 antibody at 20 ug/mL.

## Background

---

IFITM1 (Interferon inducible transmembrane protein 1) is a member of the IFN-inducible transmembrane protein family. It is an essential mediator of interferon-gamma-induced antiproliferation and plays a role in the control of cell growth. IFITM1 is upregulated in several tumor types and may be useful as a tumor biomarker. Both mouse IFITM1 and IFITM3 are expressed on the cell surfaces of primordial germ cells in a developmentally-regulated manner. IFITM1 activity is required for primordial germ cell transit, and IFITM1 acts as a repulsive molecule by repelling non-IFITM1-expressing primordial germ cells from the mesoderm into the endoderm.

---

Note: This product is for in vitro research use only