

# FREM1 Antibody

Catalog No: #25146

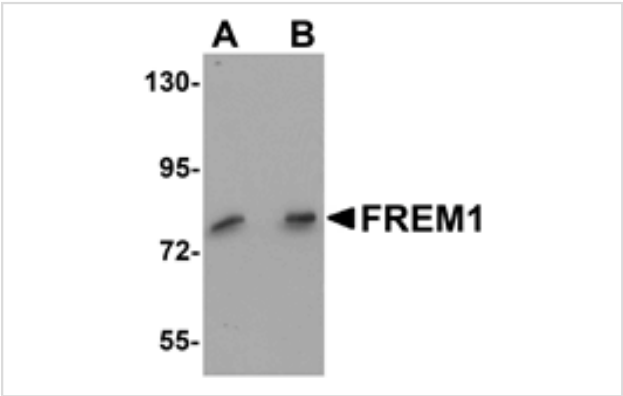


Orders: [order@signalwayantibody.com](mailto:order@signalwayantibody.com)  
Support: [tech@signalwayantibody.com](mailto:tech@signalwayantibody.com)

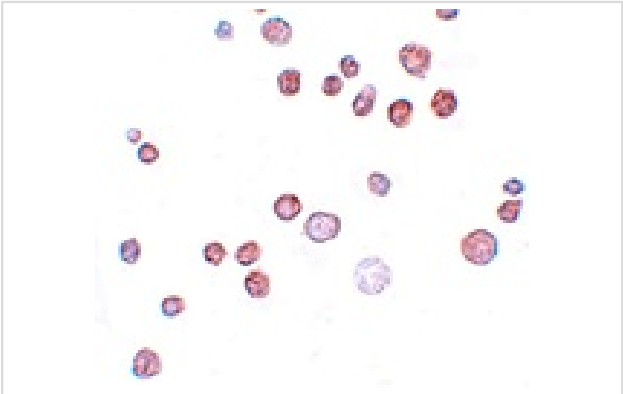
## Description

Product Name	FREM1 Antibody
Host Species	Rabbit
Clonality	Polyclonal
Purification	Affinity chromatography purified via peptide column
Applications	ELISA WB ICC
Species Reactivity	Hu Ms
Immunogen Type	Peptide
Immunogen Description	Raised against a 15 amino acid peptide near the carboxy terminus of human FREM1.
Target Name	FREM1
Other Names	FRAS1-related extracellular matrix protein 1, QBRICK, BNAR, TILRR
Accession No.	Swiss-Prot:Q5H8C1Gene ID:158326
Uniprot	Q5H8C1
GeneID	158326;
Concentration	1mg/ml
Formulation	Supplied in PBS containing 0.02% sodium azide.
Storage	Can be stored at -20°C, stable for one year. As with all antibodies care should be taken to avoid repeated freeze thaw cycles. Antibodies should not be exposed to prolonged high temperatures.

## Images



Western blot analysis of FREM1 in K562 cell lysate with FREM1 antibody at (A) 0.5 and (B) 1ug/mL.



Immunocytochemistry of FREM1 in K562 cells with FREM1 antibody at 20 ug/mL.

## Background

---

FREM1 is a member of the FRAS1-related extracellular matrix protein family and is thought to play a role in craniofacial and renal development. FREM1 functions as an extracellular matrix protein that is essential for epidermal adhesion during embryogenesis and may also participate in epidermal differentiation. It is recognized by cells in the embryonic skin and hair follicles through different members of the integrin family. Deficiency in the Fras1/Frem genes gives rise to the bleb phenotype, which is equivalent to the human hereditary disorder Fraser syndrome.

---

Note: This product is for in vitro research use only