

SRSF10 Rabbit pAb

Catalog No: #29694

Package Size: #29694-1 50ul #29694-2 100ul

Orders: order@signalwayantibody.com

Support: tech@signalwayantibody.com

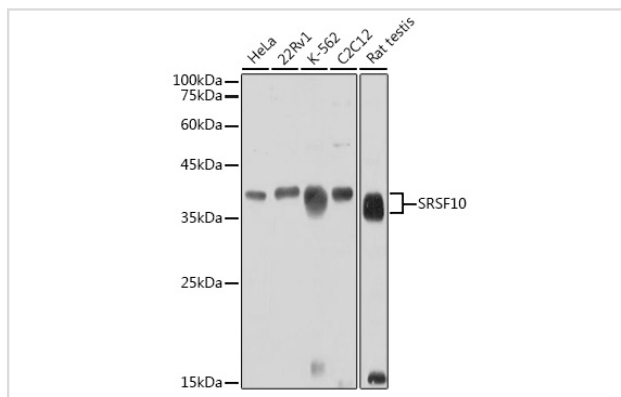
Description

Product Name	SRSF10 Rabbit pAb
Host Species	Rabbit
Clonality	Polyclonal
Isotype	IgG
Applications	WB
Species Reactivity	Human,Mouse,Rat
Immunogen Description	Recombinant protein of human SRSF10.
Other Names	SRSF10;FUSIP1;FUSIP2;NSSR;PPP1R149;SFRS13;SFRS13A;SRp38;SRp40;TASR;TASR1;TASR2
Accession No.	Swiss-Prot#: Q16570 NCBI Gene ID:10772
Calculated MW	Calculated MW 20kDa/21kDa/22kDa/31kDa Observed MW 40KDa
Formulation	Buffer: PBS with 0.02% sodium azide,50% glycerol,pH7.3.
Storage	Store at -20°C. Avoid freeze / thaw cycles.

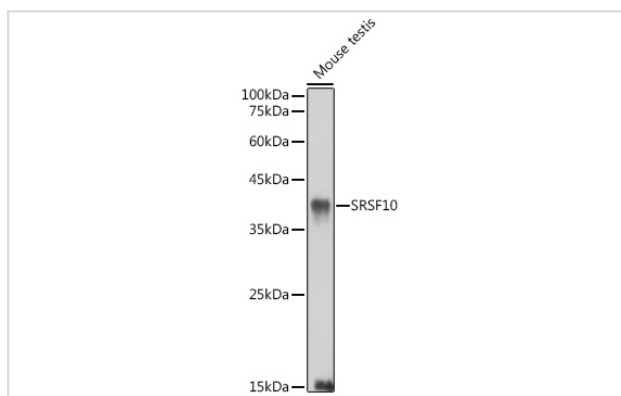
Application Details

WB □ 1:500 - 1:2000

Images



Western blot analysis of extracts of various cell lines, using SRSF10 antibody.



Western blot analysis of extracts of Mouse testis, using SRSF10 antibody.

Background

This gene product is a member of the serine-arginine (SR) family of proteins, which are involved in constitutive and regulated RNA splicing. Members of this family are characterized by N-terminal RNP1 and RNP2 motifs, which are required for binding to RNA, and multiple C-terminal SR/RS repeats, which are important in mediating association with other cellular proteins. This protein interacts with the oncoprotein TLS, and abrogates the influence of TLS on adenovirus E1A pre-mRNA splicing. This gene has pseudogenes on chromosomes 4, 9, 14, 18, and 20. Alternative splicing results in multiple transcript variants.

Note: This product is for in vitro research use only