

Stat2 Polyclonal Antibody

Catalog No: #44126

Package Size: #44126-1 50ul #44126-2 100ul

Orders: order@signalwayantibody.comSupport: tech@signalwayantibody.com

Description

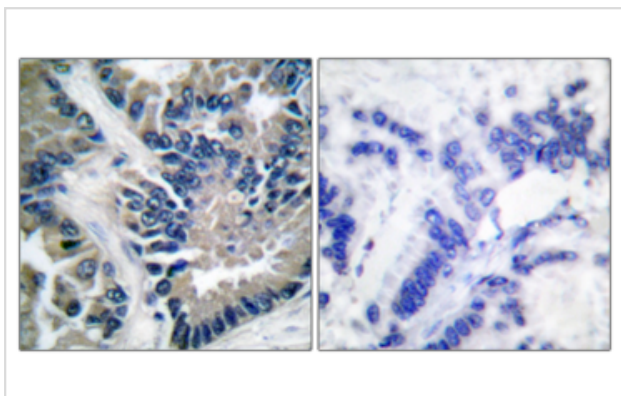
Product Name	Stat2 Polyclonal Antibody
Host Species	Rabbit
Clonality	Polyclonal
Isotype	IgG
Applications	WB;IP;IHC-p;IF
Species Reactivity	Human;Mouse;Rat
Specificity	Stat2 Polyclonal Antibody detects endogenous levels of Stat2 protein.
Immunogen Description	The antiserum was produced against synthesized peptide derived from human STAT2.
Accession No.	Swiss-Prot#: P52630 NCBI Gene ID:6773
Calculated MW	113KD
Concentration	1 mg/ml
Formulation	Liquid in PBS containing 50% glycerol, 0.5% BSA and 0.02% sodium azide.
Storage	Store at -20°C/1 year

Application Details

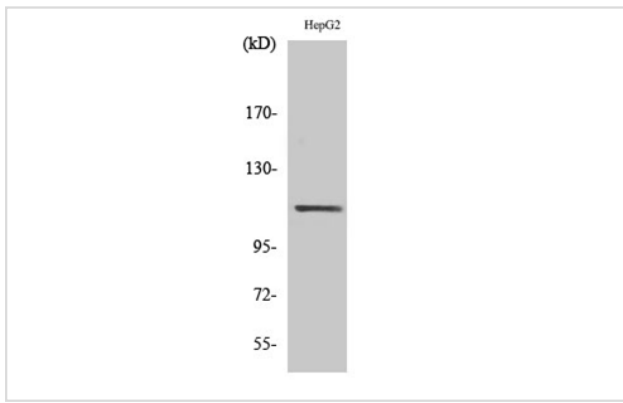
Western Blot: 1/500 - 1/2000

Immunohistochemistry: 1/100 - 1/300

Images



Immunohistochemistry analysis of paraffin-embedded human lung carcinoma tissue, using STAT2 Antibody.



Western Blot analysis of various cells using Stat2 Polyclonal Antibody

Note: This product is for in vitro research use only