

FPR1 Polyclonal Antibody

Catalog No: #44214

Package Size: #44214-1 50ul #44214-2 100ul

Orders: order@signalwayantibody.comSupport: tech@signalwayantibody.com

Description

Product Name	FPR1 Polyclonal Antibody
Host Species	Rabbit
Clonality	Polyclonal
Isotype	IgG
Purification	The antibody was affinity-purified from rabbit antiserum by affinity-chromatography using epitope-specific immunogen.
Applications	WB;IHC-p;IF/ICC;ELISA
Species Reactivity	Human; Mouse; Rat
Immunogen Description	The antiserum was produced against synthesized peptide derived from human FPR1.
Target Name	FPR1
Accession No.	Swiss-Prot#P21462NCBI Gene ID:2357
Calculated MW	40kD
Concentration	1 mg/ml
Formulation	Liquid in PBS containing 50% glycerol, 0.5% BSA and 0.02% sodium azide.
Storage	Store at -20°C/1 year

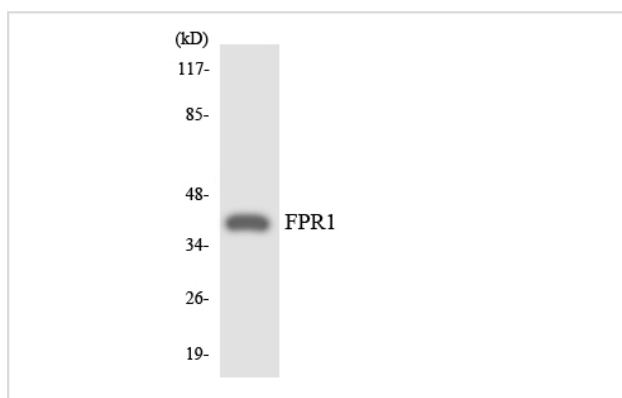
Application Details

Western Blot: 1/500 - 1/2000

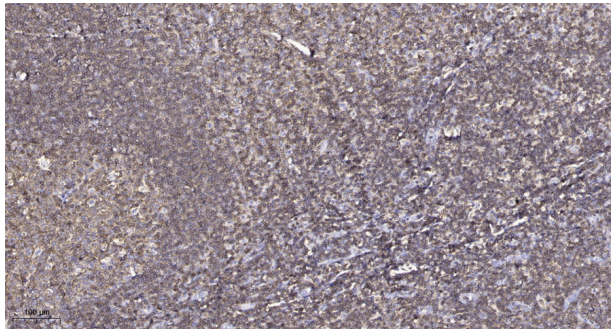
Immunohistochemistry: 1/100 - 1/300

Immunofluorescence: 1/200 - 1/1000. ELISA: 1/5000.

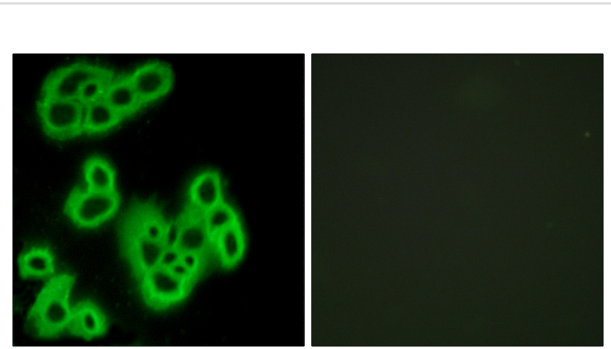
Images



Western blot analysis of the lysates from COLO205 cells using FPR1 antibody.



Immunohistochemical analysis of paraffin-embedded human tonsil.



Immunofluorescence analysis of MCF7 cells, using FPR1 Antibody. The picture on the right is blocked with the synthesized peptide.

Note: This product is for in vitro research use only