

AMMR1 rabbit Antibody

Catalog No: #44215

Package Size: #44215-1 50ul #44215-2 100ul

Orders: order@signalwayantibody.comSupport: tech@signalwayantibody.com

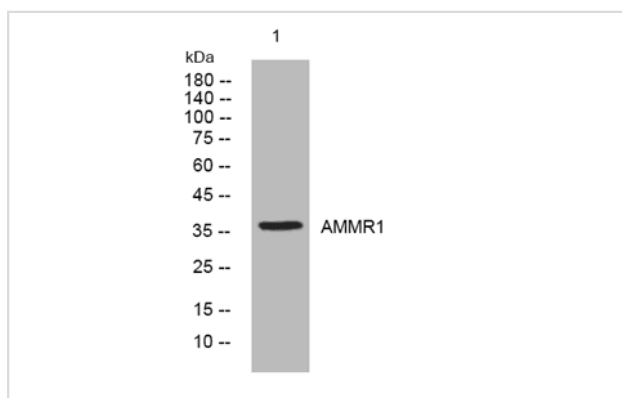
Description

Product Name	AMMR1 rabbit Antibody
Host Species	Rabbit
Clonality	Polyclonal
Isotype	IgG
Purification	The antibody was affinity-purified from rabbit serum by affinity-chromatography using specific immunogen.
Applications	WB
Species Reactivity	Human Mouse
Immunogen Description	Synthesized peptide derived from human AMMR1
Accession No.	Swiss Prot:Q9Y4X0GeneID:9949
Calculated MW	37kDa
Concentration	1 mg/ml
Formulation	Liquid in PBS containing 50% glycerol, 0.5% BSA and 0.02% sodium azide.
Storage	Store at -20°C/1 year

Application Details

WB 1: 500-2000

Images



Note: This product is for in vitro research use only